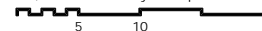




D - D METSZET

±0,00 = Rendezvényterem padlóvonala

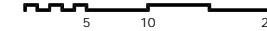


M=1:250

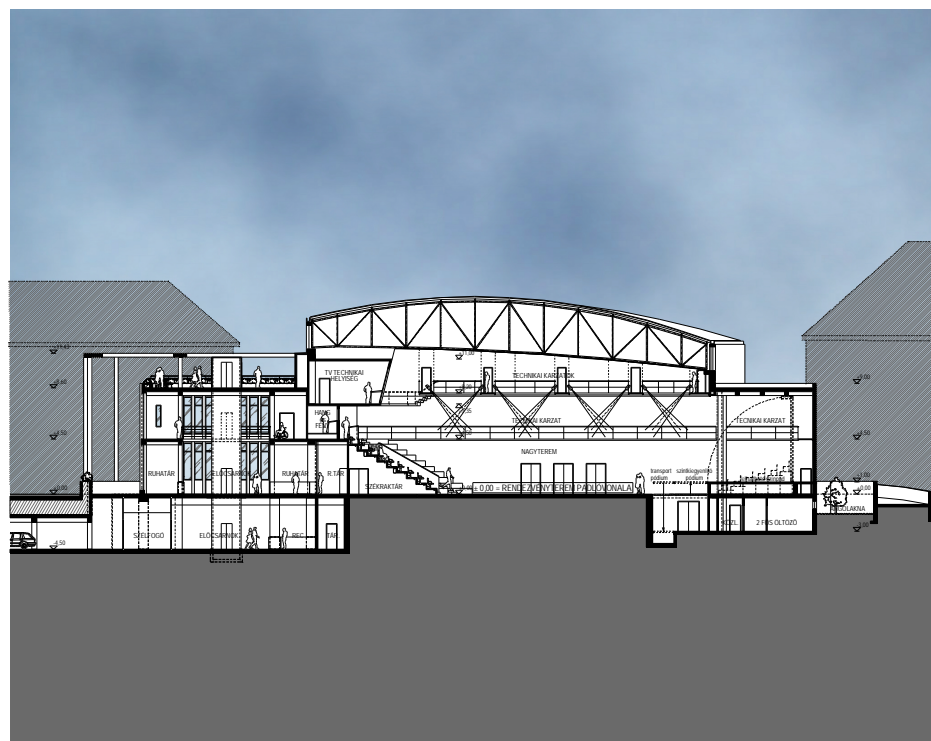


A - A METSZET

$\pm 0,00$ = Rendezvényterem padlóvonala

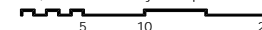


M=1:250

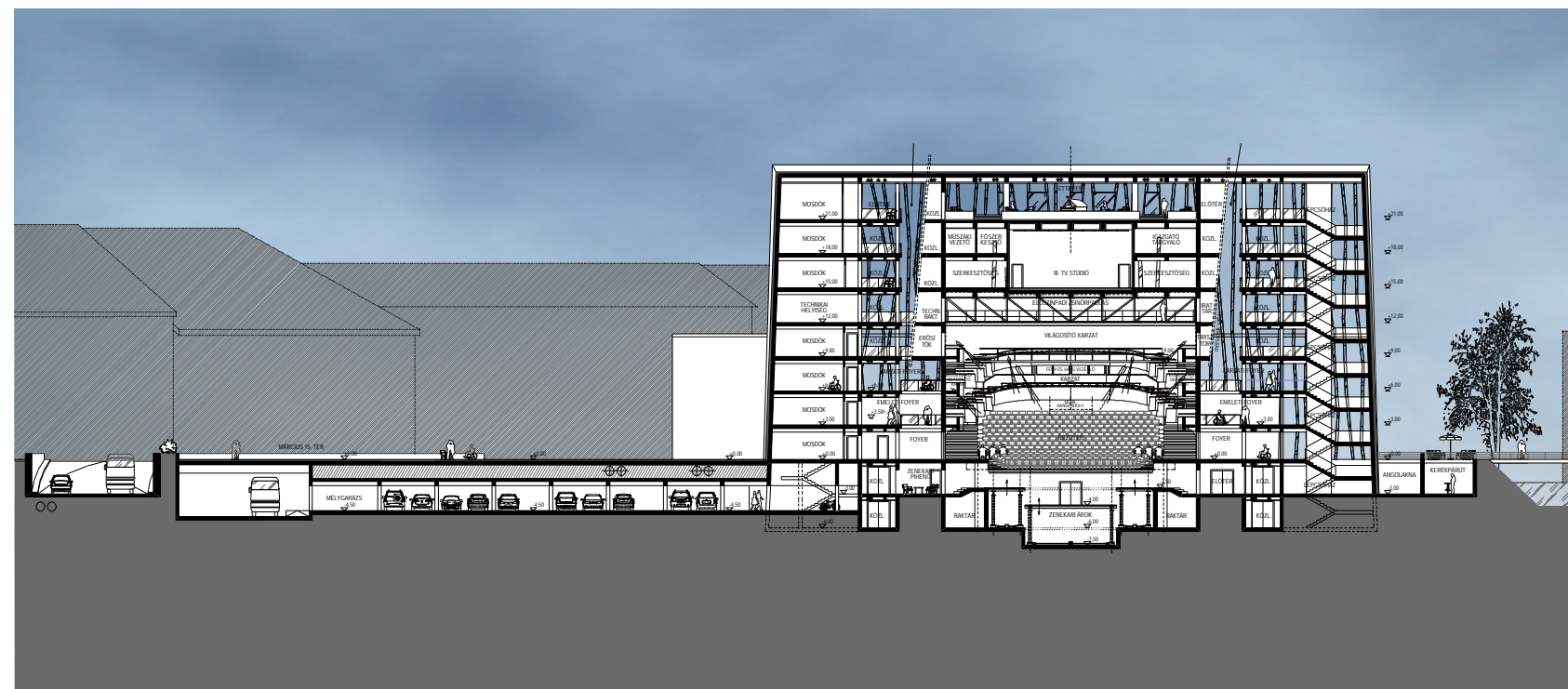


B - B METSZET

±0,00 = Rendezvényterem padlóvonala

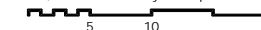


M=1:250



C - C METSZET

±0,00 = Rendezvényterem padlóvonal



M=1:250