

ground floor plan



Image from the book "Architecture of modern Italy"

The square, place for the collective and the urban, intrinsic qualities to the definition of city itself, redefines and characterizes the way Maribor relates to the Drava river by its gesture of being a balcony over it. This drawing reinforces the relationship with the water and with the other waterfront. The river is increasingly a frontier.

The square is now a new door to the old city, asserting itself as the west boundary of Lent, on the one hand and as a center of the waterfront on the other. Judgment Tower works now, not as an element that marks a frontier but as a key point that opens itself to the continuity of the relationship between the square and Lent, in some way here needs its importance as an exceptional element to the urban design.

The square is where the river, the museum and the city meet.

The design of the building operates through the redrawing of the topography of the place. At the low level, the platform defines the level of the museum's ground floor and of the square, that design itself in its limit with the river. At the high level, a second platform articulates E Street and the Garden, thus establishing also the entrance location to the Creative Industry Center.

On the platform, a suspended volume of concrete and at first sight easily read, cut out over E Street, establishes between the two the place of the museum in relation with the city, without depending in several different volumes.

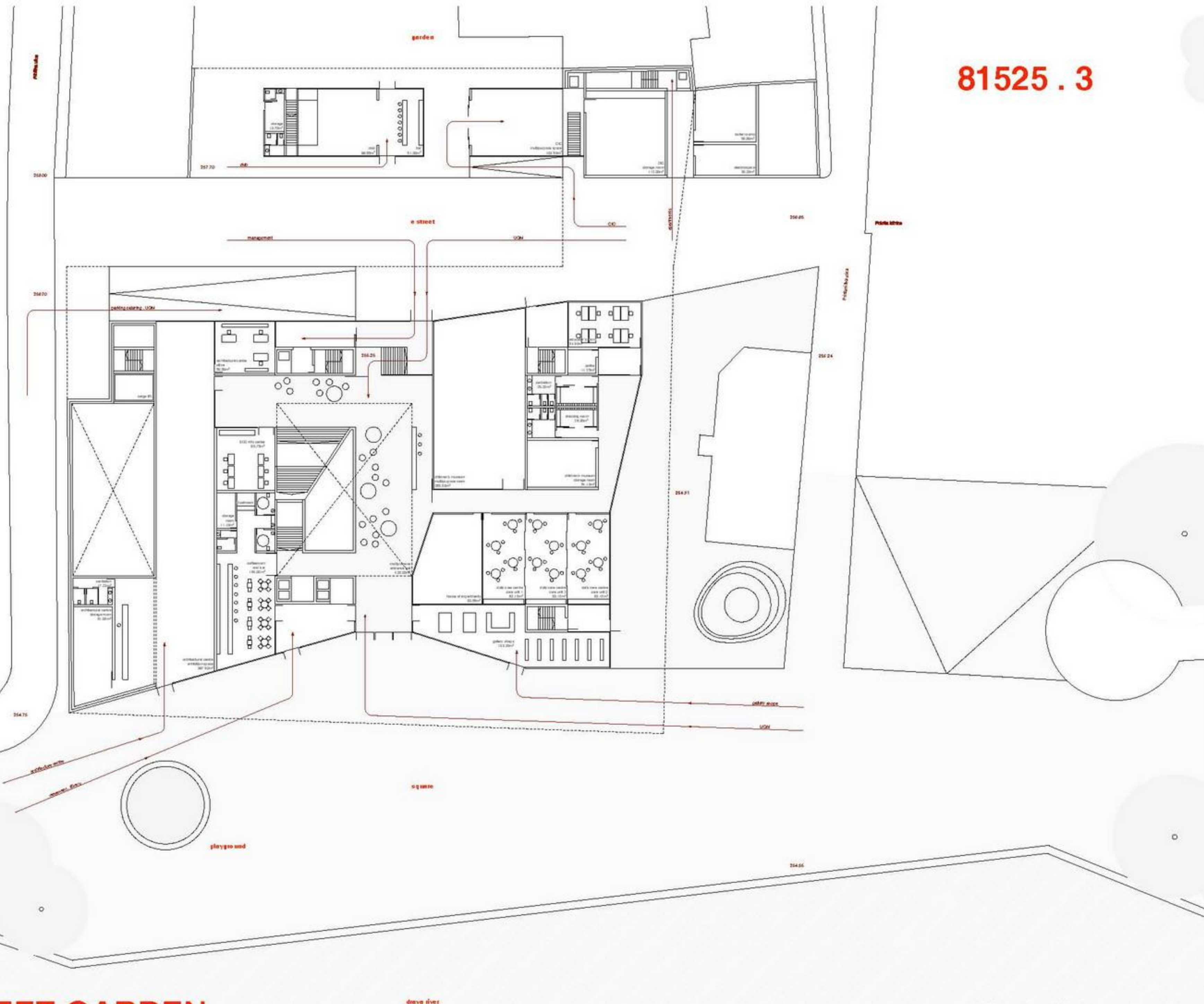
The clarity of the spatial organization of concepts is:

It is in this void that the tension of the different scales between the UCM and its near surroundings become balanced. A permeable space in its use, paths and in the transparencies and reflexes of its plans, it is also a contact point for the two realities, the platform and the volume, whenever demanded by the relationship with the city or the programme requirements.

The volumetric design was meant to find the fair and adequate scale for the building, in its relation with the existing buildings in the nearby areas; in its relation with the river and its margins and as an exceptional cultural and public building.

Due to this adequacy between the building and the house in the east side, we propose that it becomes part of the museum, eventually a part of the Children's Museum, redesigning the space between the two.

81525 . 3



SQUARE STREET GARDEN