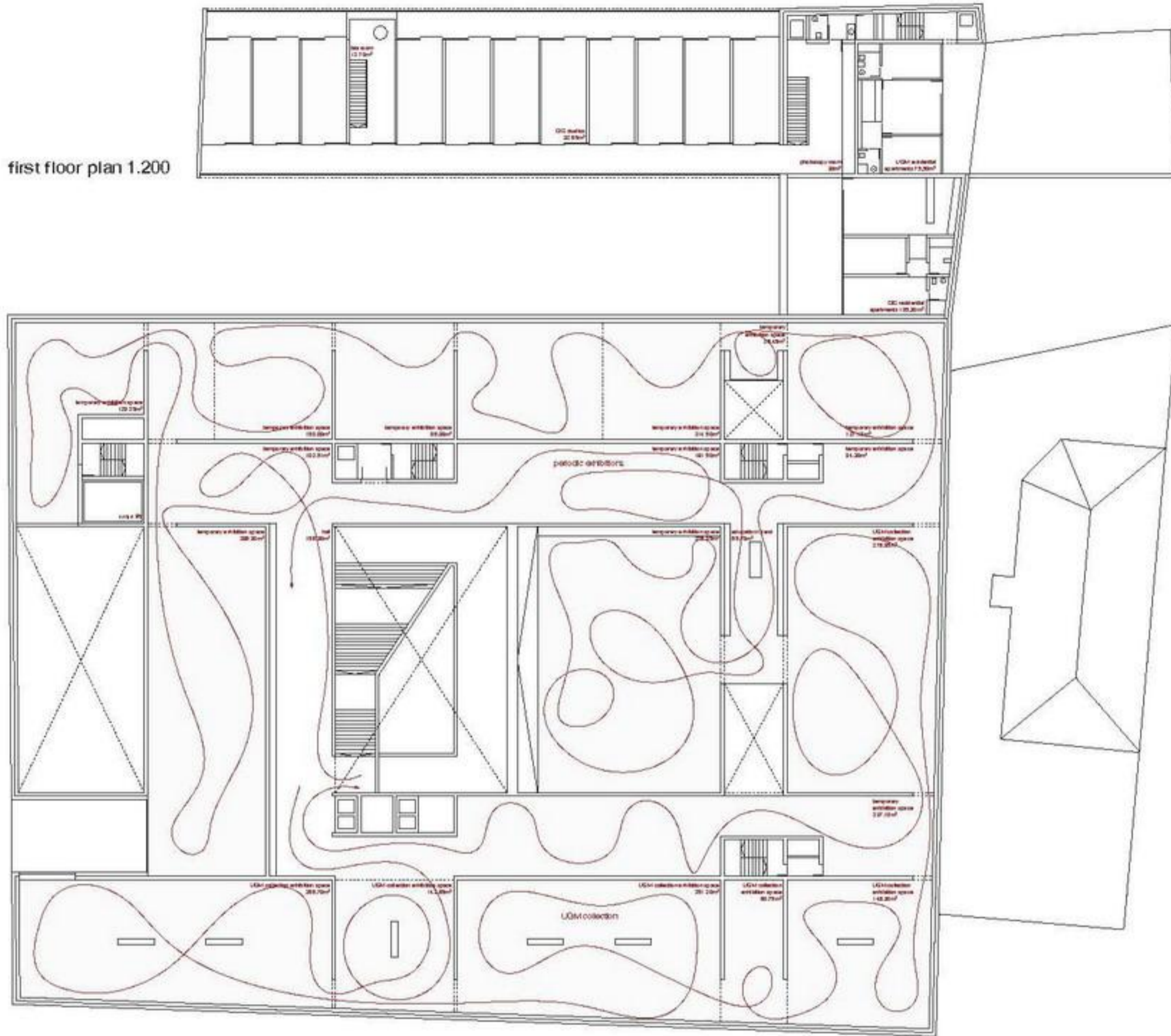


first floor plan 1.200



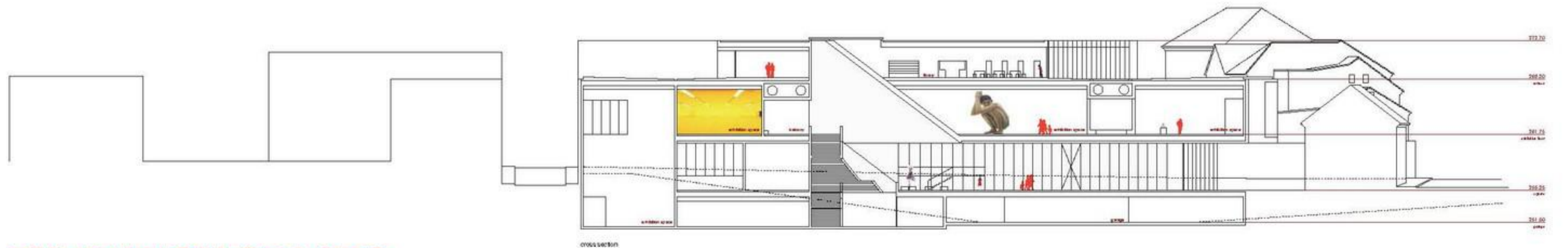
artwork view from the 0 floor

The exhibition areas located on the first floor translate into two independent circuits, one for permanent exhibitions and the other for temporary exhibitions, with access from a balcony overlooking the atrium. On the 1st floor, two rooms complete the exhibition area. The way they are organized and relate to each other, in the setting of the strategic openings, allow great flexibility in the design of the exhibition circuits.

The diversity of the rooms is achieved by the different volumes and by the qualities of light, both by a direct relation with the exterior and by the option of indirect light in relation with the other rooms. Through casual openings, it is intended to become perceptible, in a subtle way, the exterior's luminous variations. The non-uniformity of the concrete surfaces, in terms of colour and texture, offers the quality of making the limits between light and shadow diffuse, thus interrupting the plan.

From this ability, one reads the wall plans as surfaces where depth can be felt. One could go as far as to say that we stand before multiple juxtaposed plans. Despite being opaque, the material reveals itself full of gestures. For this reason, any element set against this wall is immediately evident. It allows the visitors to the exhibitors, to individually dwell in each of the elements, and to establish a fluctuation between the different elements of the exhibition.

We believe that this is also due to the fact that we do not stand before the skin that covers the bones of the building, but before its skeleton itself.



EXHIBITION SPACES