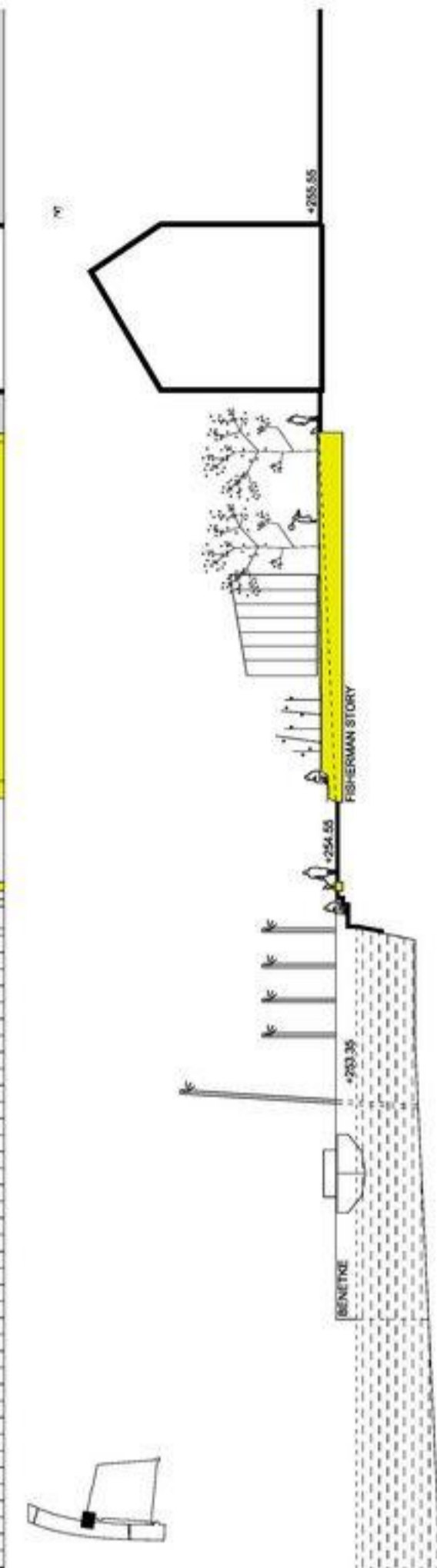
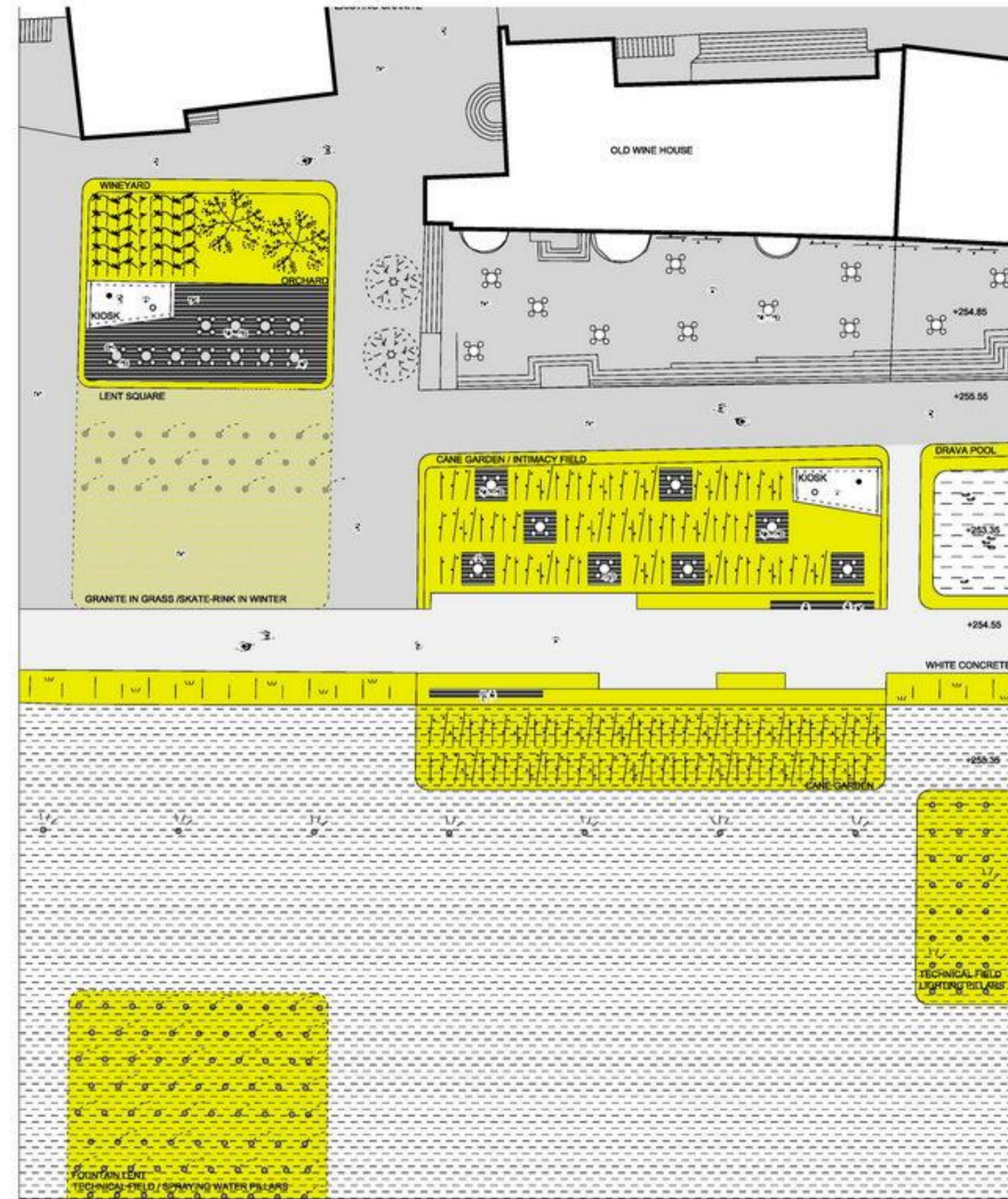


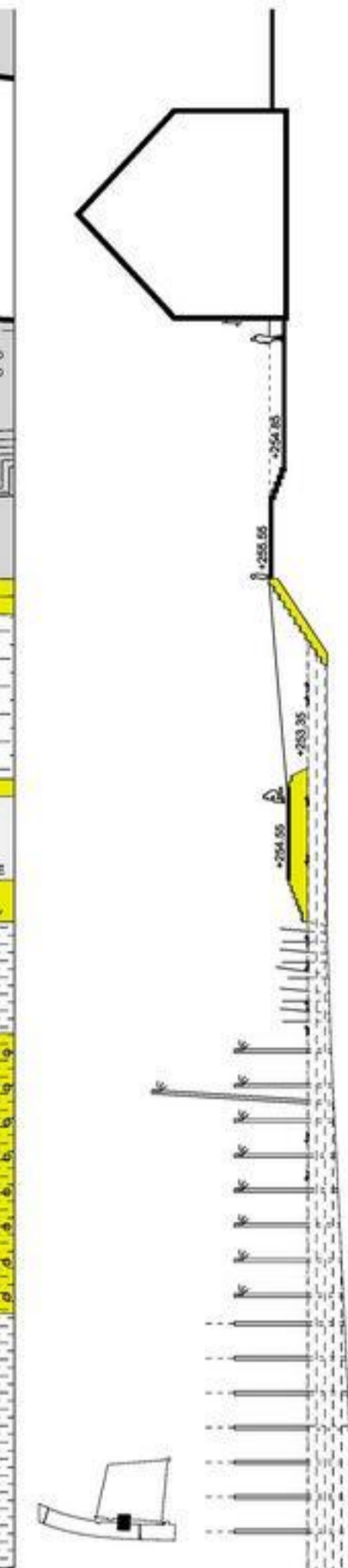
BENETKE EMBANKMENT SITEPLAN 1 200 0 5 10 20 SECTION 1 200



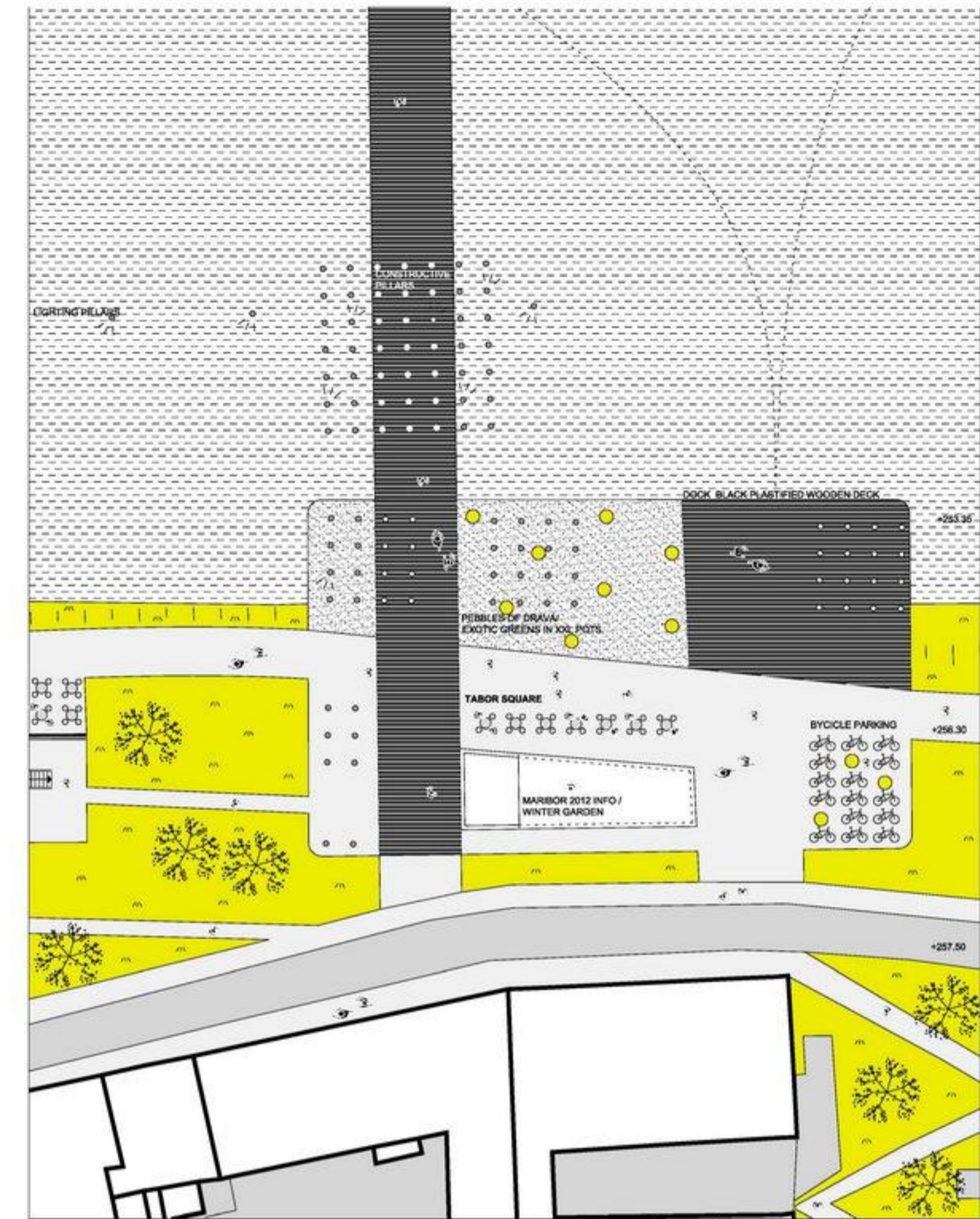
SECTION 1 200



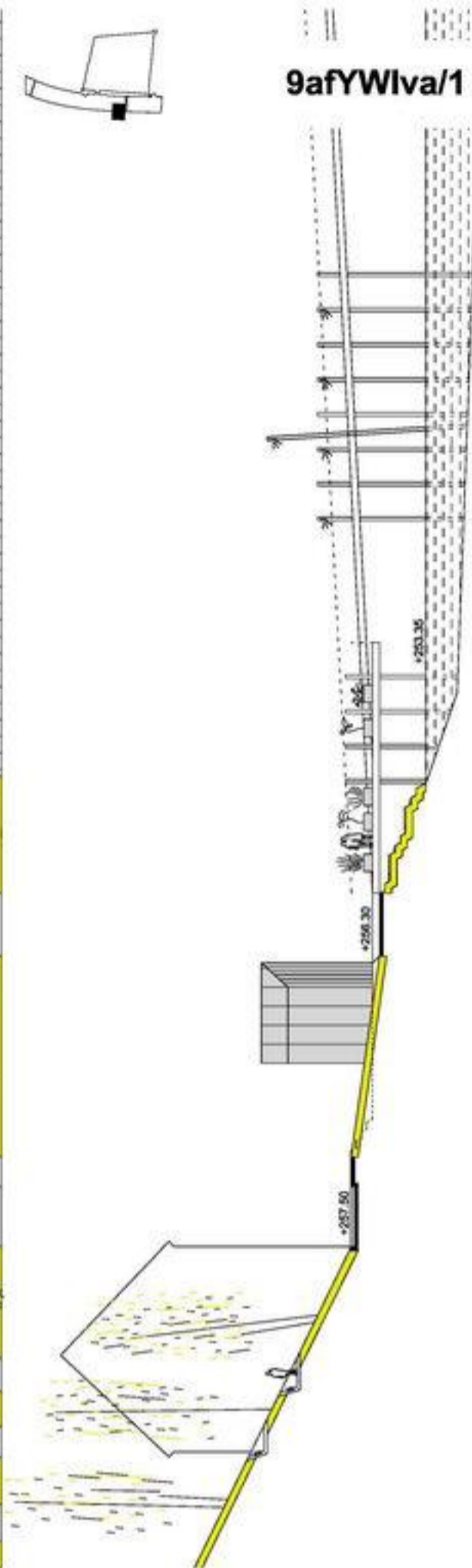
LENT EMBANKMENT SITEPLAN 1 200 0 5 10 20 SECTION 1 200



SECTION 1 200



TAVOR EMBANKMENT SITEPLAN 1 200 0 5 10 20 SECTION 1 200

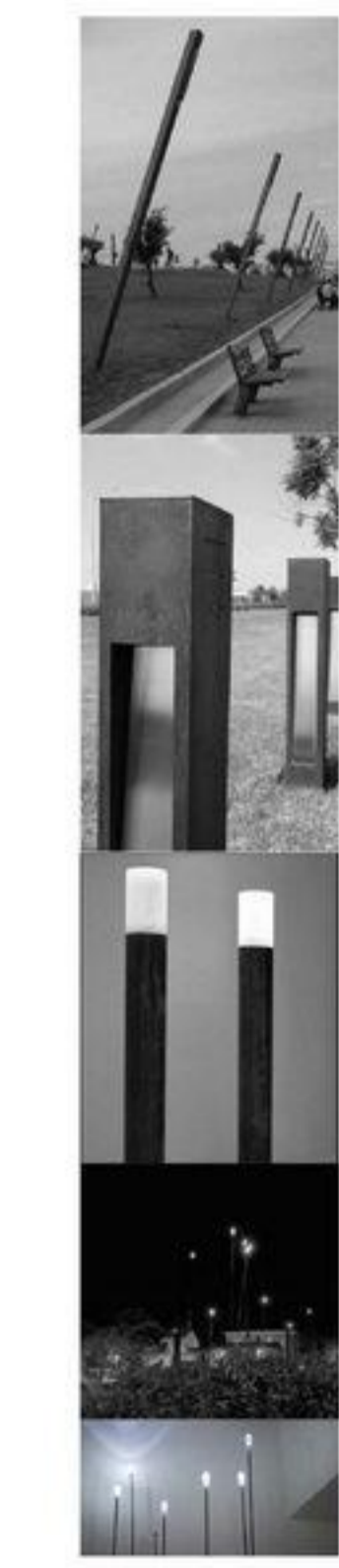
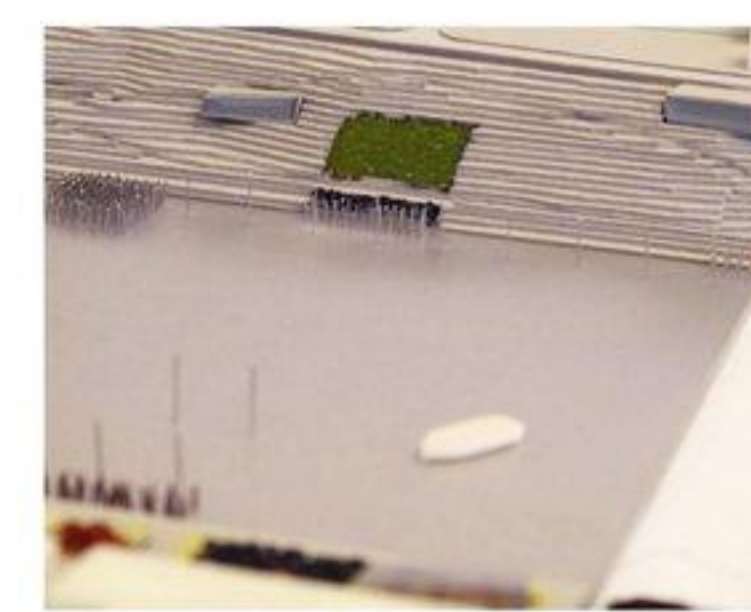
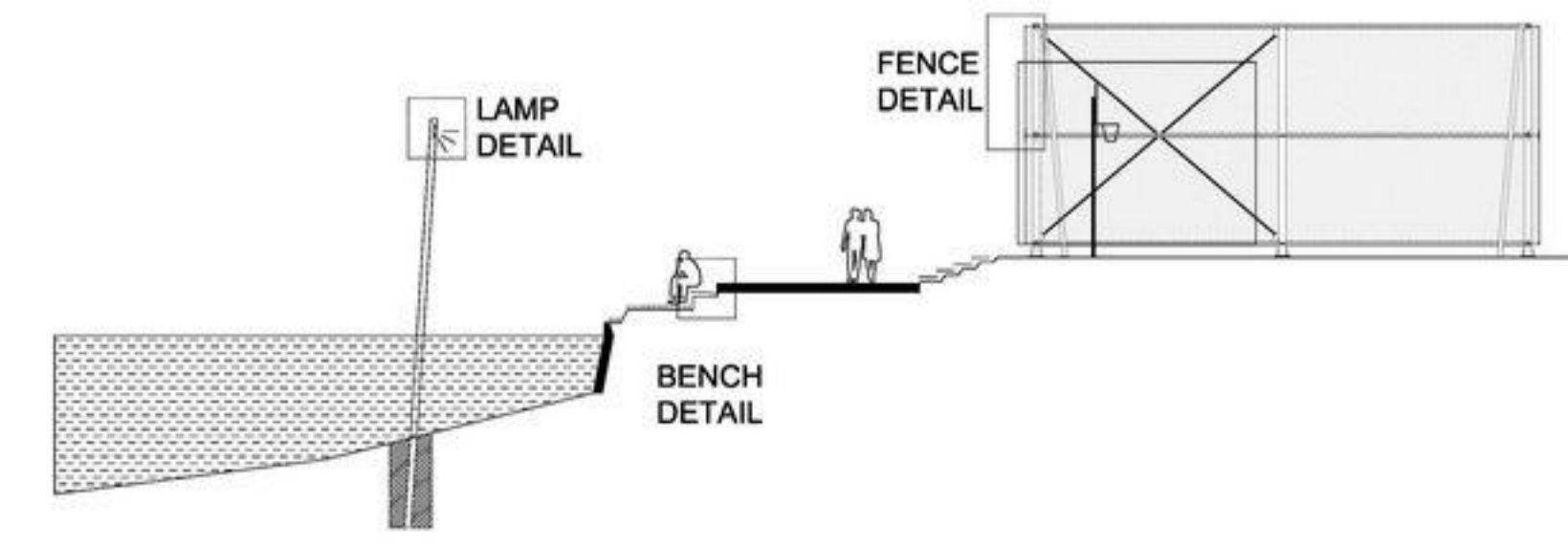
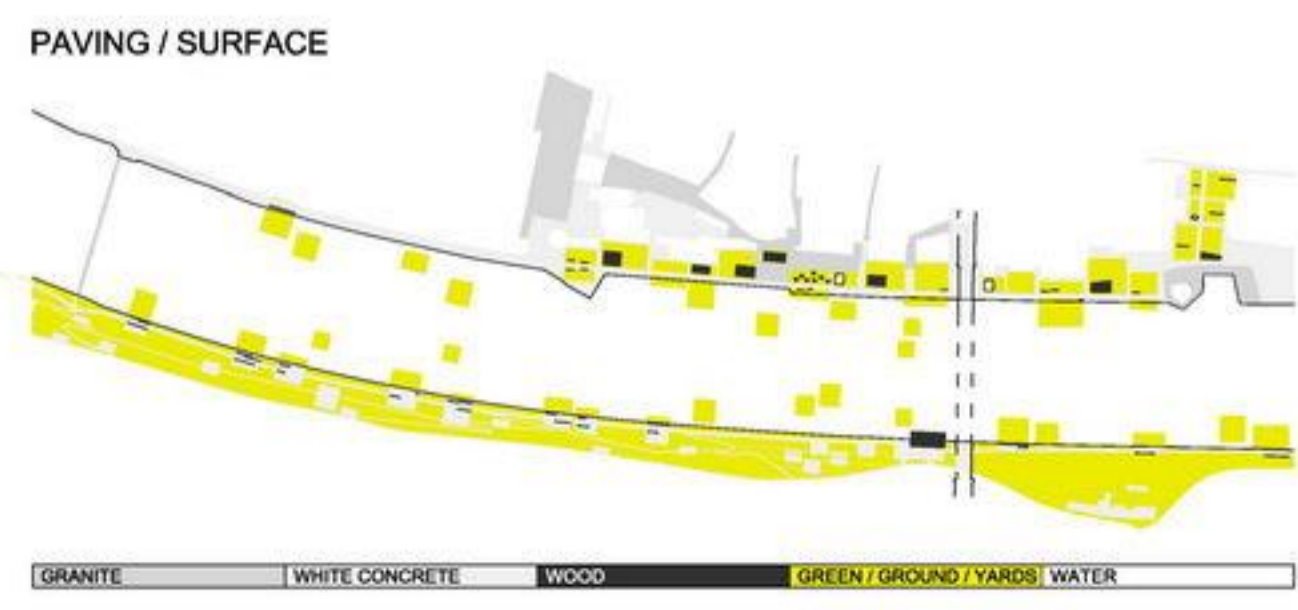
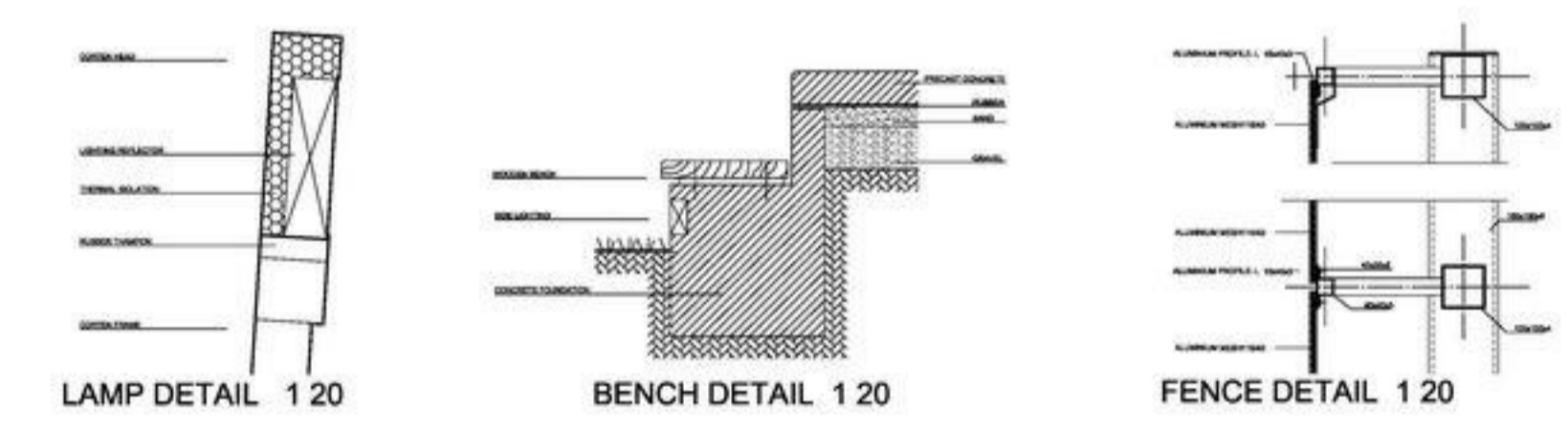


SECTION 1 200

**Lent**  
 The atmosphere and scale of the old city fabric is continued. It functions as an ambient space at the entrance of the city. The vines of Stajerska can be sampled in a small pavilion located in this zone. In the garden are a series of vines, with the terrarosa dominating.  
 The paving consists of granite 6X6 squares, placed densely along the paths and the fields in front of the fields - granite blocks are placed more sporadically in the grass, mixed with sprinklers whose spouts are 10cm, and during the winter provide for a children's ice skating rink.

**Tabor**  
 Tabor field is the only square of the south bank and the space of interface with the pedestrian bridge. Taking into consideration the natural character of the southern shore, the Tabor field is not planted. The pavilion on this square functions as the information point for the Maribor 2012 event and is a place from which information, projections, and fireworks are launched.  
 The surface is paved with white prefabricated concrete.  
 Small sensitive plants can be placed on this square in concrete panels during the summer months.  
 The pavilion can later be used as a winter garden.

**Angled Squares**  
 The existing market structure resolves the difference in height between Benetke and Koroska street through a terracing strategy. The organization of the angled gardens which tie Knez Kocij street and the space north of the Water Tower are also similarly organized. Three fields of densely planted fruit trees divide the high speed traffic artery from the public space of the river bank, helping create a true natural reserve in the heart of the city. Through the use of sprinklers for the fruit trees a light mist is created.



- 34. SOUR CHERRY GARDEN
- 35. BAMBOO GARDEN
- 36. SWALLOW GARDEN
- 37. BIRD GARDEN
- 38. SWAN GARDEN WOODEN BARS FIELD
- 39. SWAN GARDEN WOODEN BARS FIELD
- 40. DUCK GARDEN CORTEN BARS FIELD
- 41. CORTEN BARS FIELD
- 42. TAVOR SQUARE MARIBOR 2012 INFO WINTER GARDEN BIKE PARKING
- 43. CANE FIELD
- 44. BAMBOO FIELD
- 45. WOODEN BARS FIELD
- 46. BAMBOO FIELD
- 47. CORTEN BAR FIELD
- 48. FOUNTAIN "WATER TOWER"
- 49. MARKET