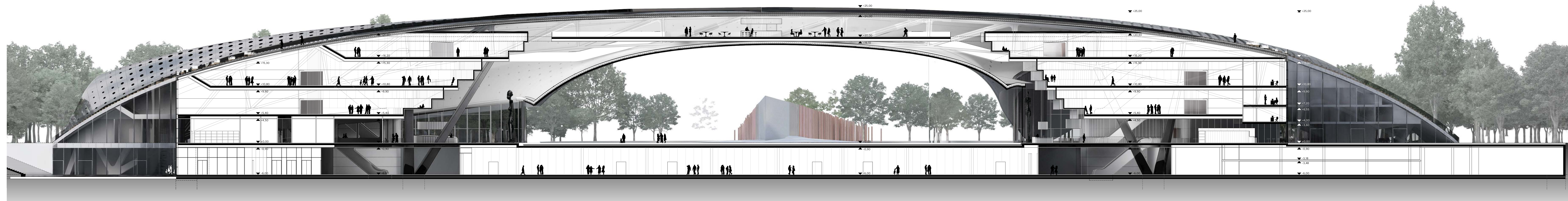
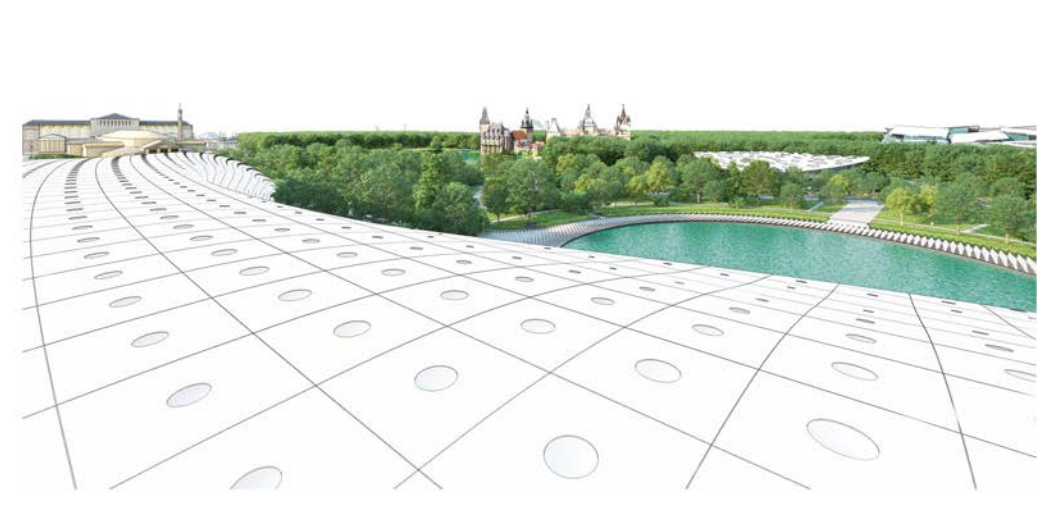


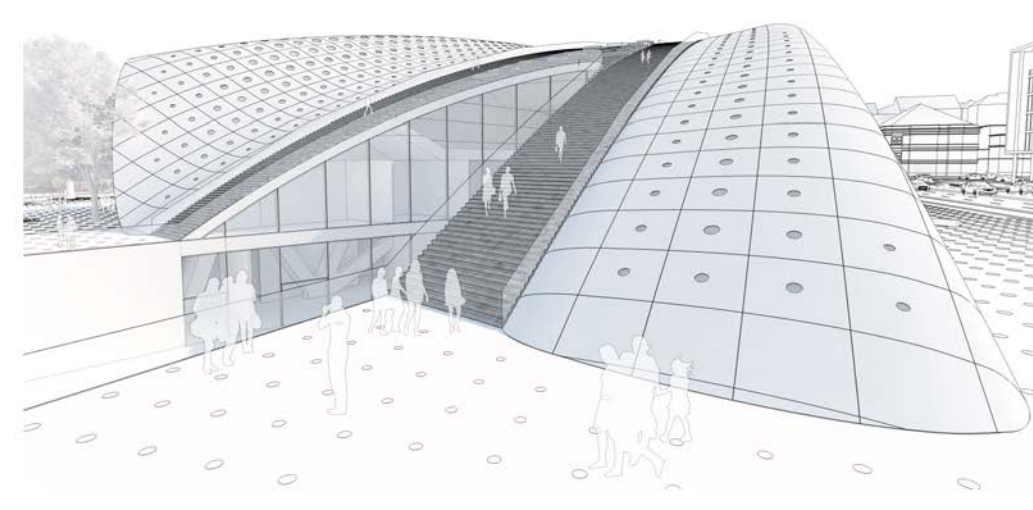
# FIRST FLOOR



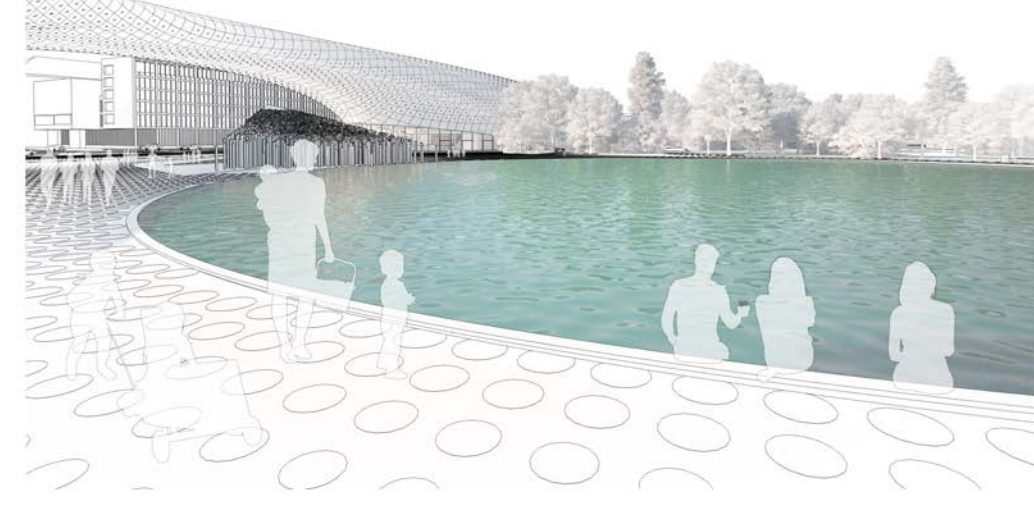
## visitor experience



View from the roof terrace and the café.  
It is by looking around from the highest point of the building that visitors will realise the context of the LOCATION and the BUILDING in the urban structure. In one direction, there is a view of the axis of the Városligeti fasor in the midst of a dense urban mass, by contrast to the burgeoning green of the Park in the opposite direction, the building itself constituting a transition. THE GATE



Experiencing reaching a vantage point.  
In terms of spatial perception, it is a basic human drive to reach higher ground. Unlike in Buda, on the Pest side of the Danube, that is impossible to achieve in the open. Along the backside of the building, there is a convenient flight of stairs leading to the highest point. Walking along that path, one can easily reach the top of the building in order to catch sight of the Park from an altitude higher than the tree-tops.



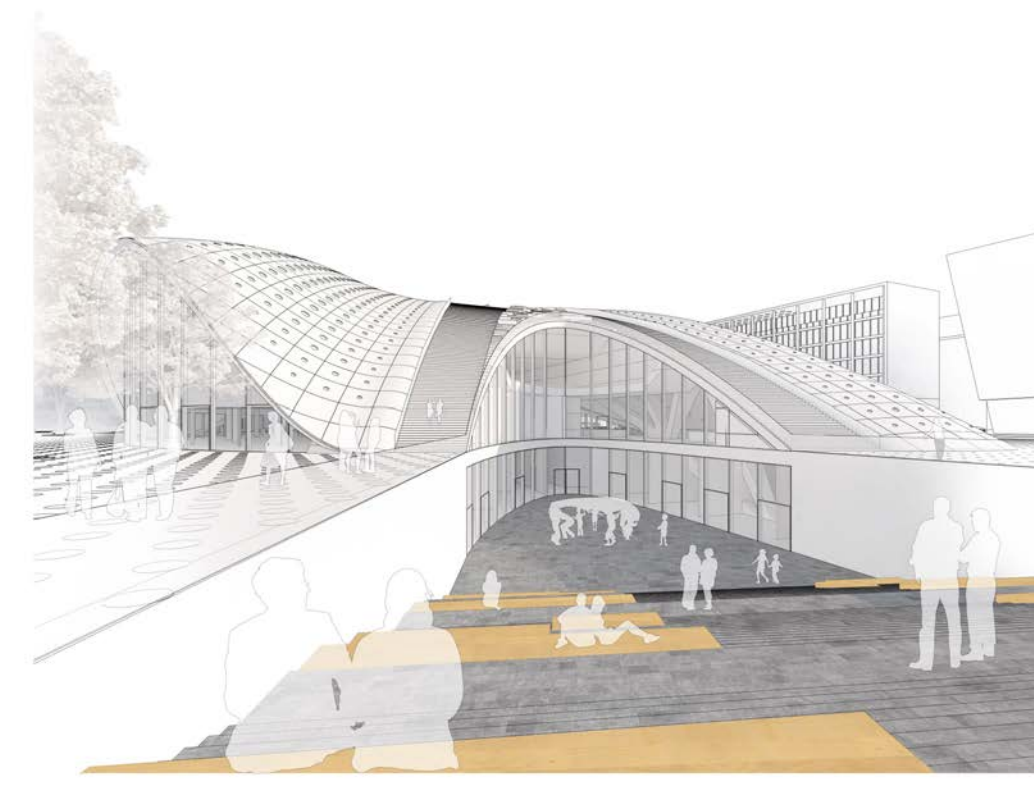
Water  
Water is an organic companion to plants and green surfaces. Water surfaces and fountains increase the experience of the closeness of nature. Visitors are welcome to bathe in the fountain! The shallow brook surrounding the pool and paved with stone slabs offers refreshment for both tourists weary of their walk and office-workers dropping down for a quick lunch.



Intense connection between the Event Hall and the Park  
Floating in space, the Event Hall will open up to the green surface of the Park through a double glass wall visually and physically as well. During intervals, the ring surrounding the hall serves as a buffer space, while the outer glass wall offers direct connection to the space outside the building.



Visual store along the walkway  
In order to add experience while passing between exhibition rooms, the visual store is located, along with the objects constituting the mass of the Museum collection, at level -1, along the temporary exhibition spaces. Visitors without a ticket to the temporary exhibitions can thus also get a glimpse of the background of the collections while passing between the two wings of the building.



Outdoor theatre - agora  
The open-air theatre is located at the focal point of the Children's Museum, at level -1. The sloping, staggered outdoor space offers an excellent venue for children's activities and open-air performances or simply for spending the rest break in a more private and protected environment.



An experience of internal play of light  
The perforation along the outer shell will result in vivid and expressive effects of light in the internal spaces and their interaction with the internal masses filling such spaces. The sharpness of prisms of light may be controlled by darkening the apertures. While these lights may not reach the exhibition spaces or may only reach them in a substantially subdued form, their presence will still permeate the entire building.

## FIRST FLOOR 1/250

