



**ANALOGIES AND REFERENCES**



ANALOGY: the naked skin (photography: Wolfgang Tillmans)  
 REFERENCE: bee brick (by Green&Blue)  
 REFERENCE: insect hotel (by Maaij Soenen & Eirna Kovisto)  
 REFERENCE: super asymmetry (by Vincent Maurer)  
 REFERENCE: different type of heat sinks (by adanheatsinks.com)

**URBAN HISTORY**



the transformation of the block from 2004 to 2024 and its imprint on the wall

**Subjective impression**

In a city, the blind walls are like the bare parts of our body not covered by clothes. It protects, feels, warms, cools, ages, gets goosebumps etc... in short, it lives.

**Urban context**

The sight of blind walls suggests a temporary state. It foretells the appearance or extension of a neighbour, or on the contrary, marks its late presence. Placeta de Grau's case is the latter. Since 2004, the intensive transformation of the former built-up area has gradually given life to the current spatial structure. The square in front of the blind wall was created by a definitive setback of the former building line. The marks of the late neighbour are still faintly visible on the blind wall.

**Space organisation**

The opposite side of the square is also enclosed by a blind wall with imprints of the demolished neighbours. The space in between is defined by these two dead ends and the memories they share. The square will feature new ceramic benches and paving elements on the contours of the former buildings. The intervention tells the story of the old city and interprets Placeta de Grau Square.

**Wall = Skin**

In our design we propose a low-tech bioactive façade that is not vulnerable to specific manufacturer products offerings and does not require maintenance capacity.

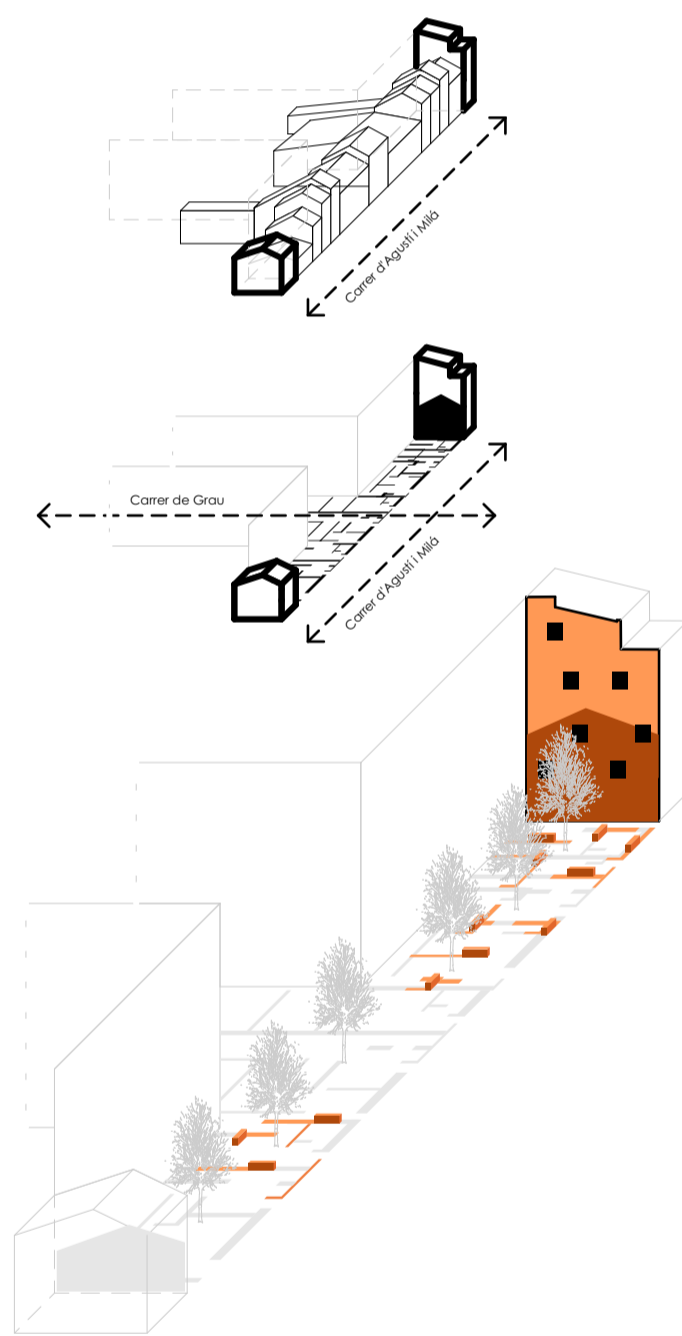
We use perforated ceramic blocks with the elements rotated at 90° degrees, in a different stacking technique from the usual one. They are standard size: 40x20x11.5cm, a widely available and high quality product. Their deep holes multiply the exterior surface and act as cooling fins. During winter their mass provides heat storage capacity. The construction starts from the existing brickwork on the ground floor. The masonry is built as a bonded stack, pinned back to the structure.

**Flora & Fauna**

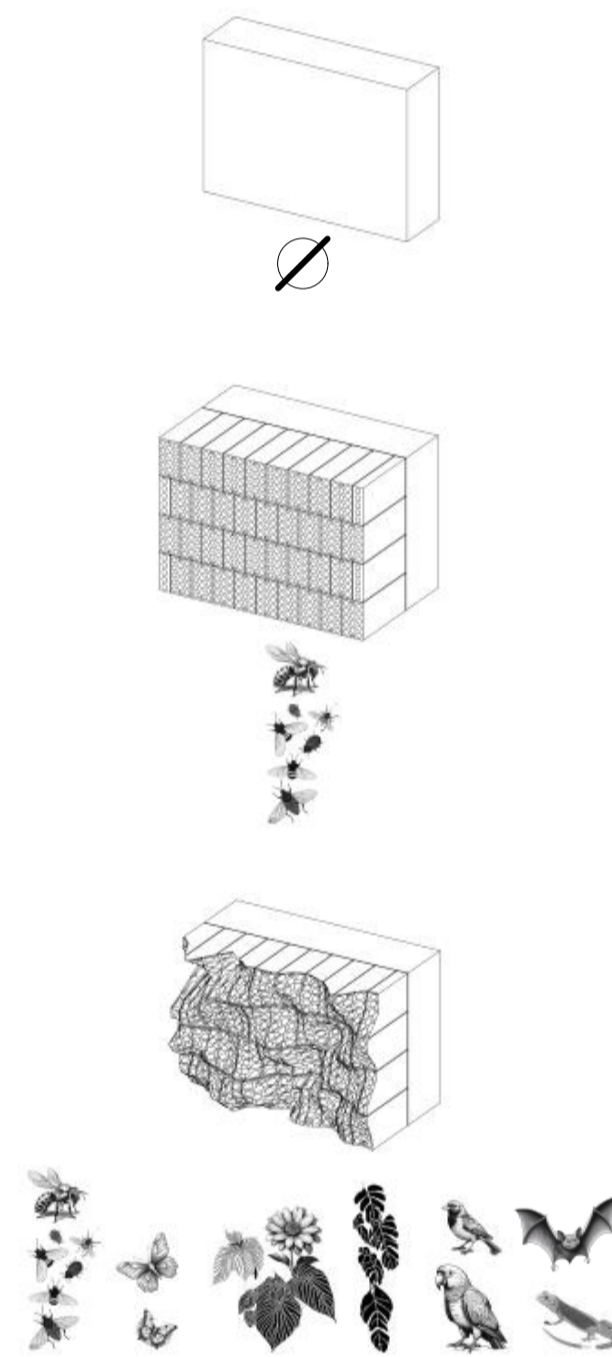
The wall fills with life. The "maintainers" of urban flora: bugs, butterflies, beetles find a new home. By removing elements, we create burrows for birds and bats. The walls of the rooms behind can optionally be fitted with new windows, according to the owners' wishes.

The imprint of the former neighbour will be reinforced. The masonry gets depth by scraping the ceramic elements. Its surface increases, airborne particles settle in the pores, clogging them. Simple plant clusters appear...

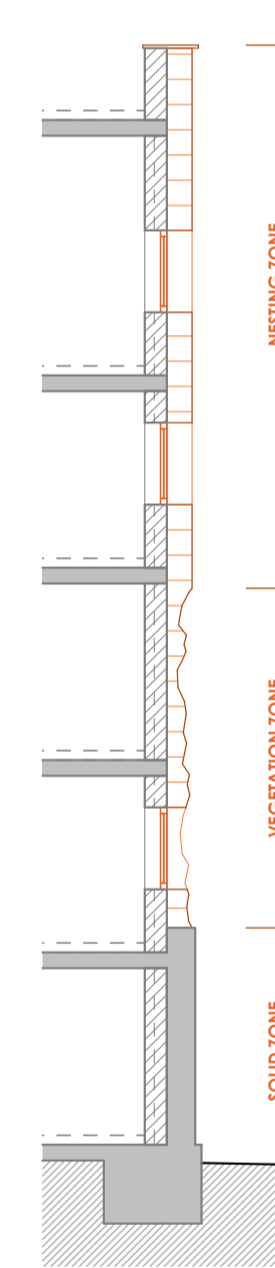
**URBAN CONTEXT**



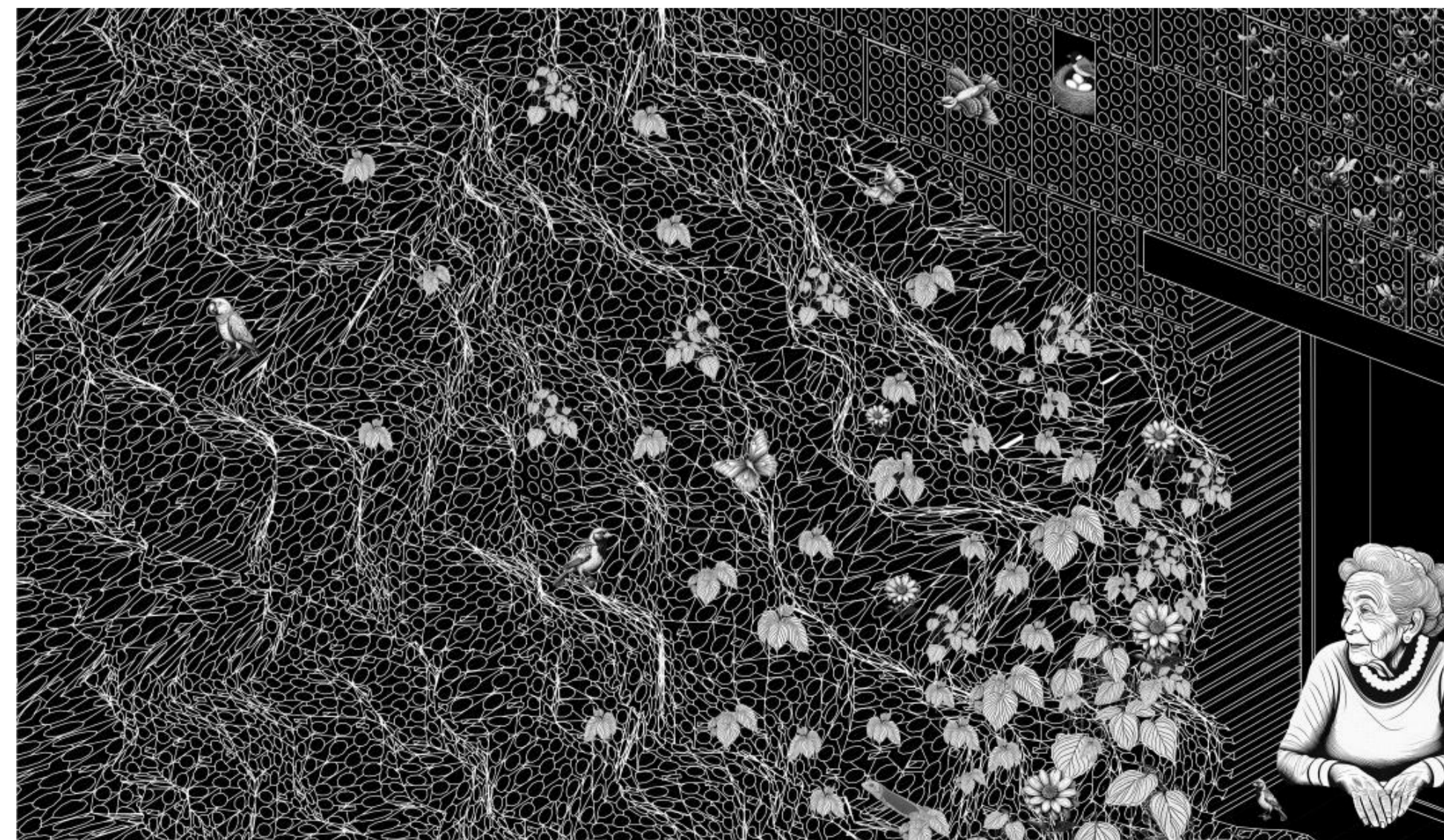
**THE LIVING WALL**



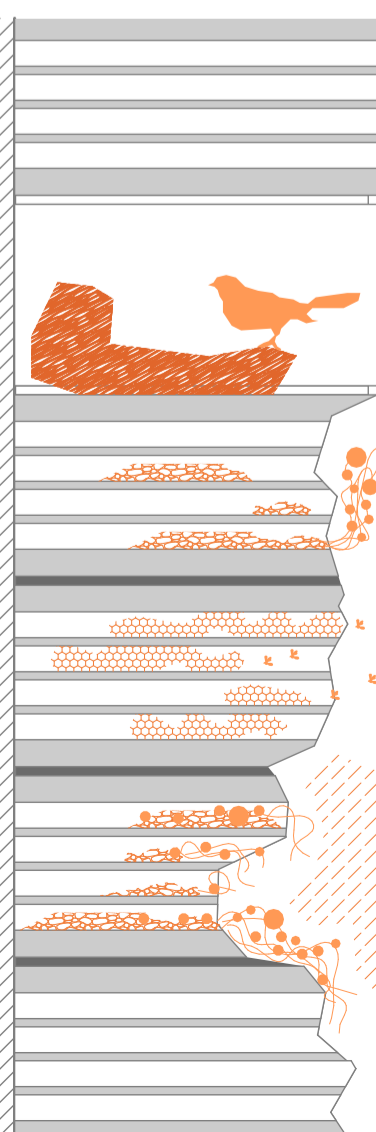
**CROSS SECTION 1:100**



**CONCEPTUAL AXONOMETRY**



**DETAIL 1:10**



**THE NAKED**

