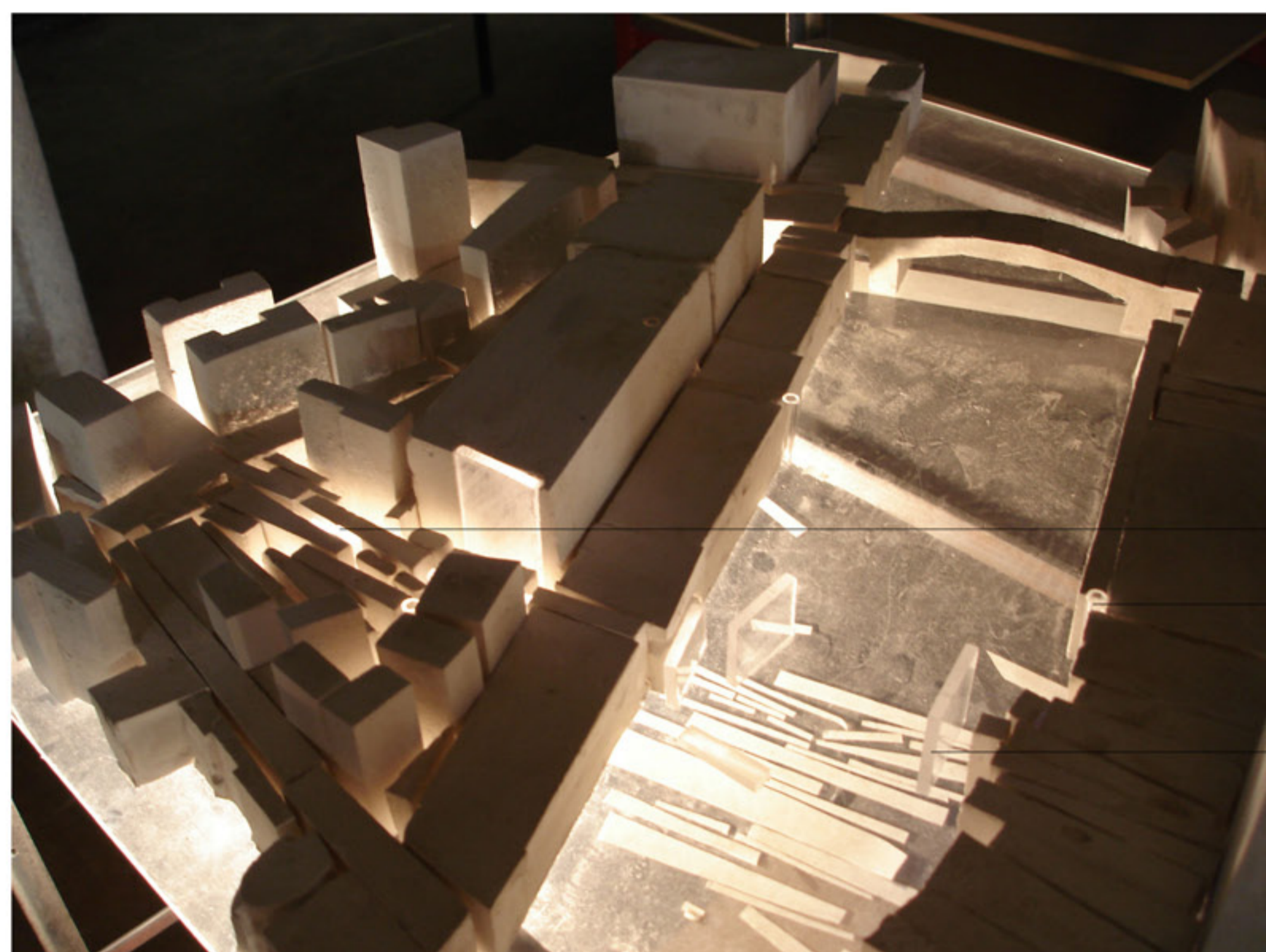


Light _____ Invisible bridges

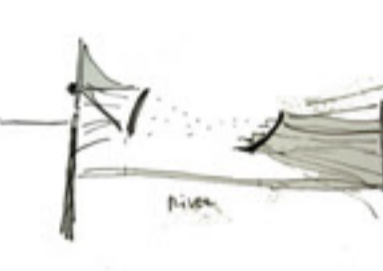
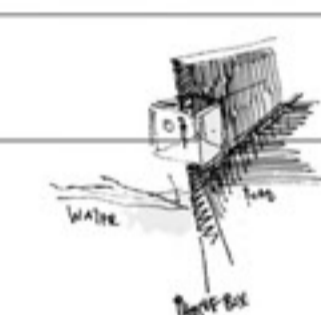
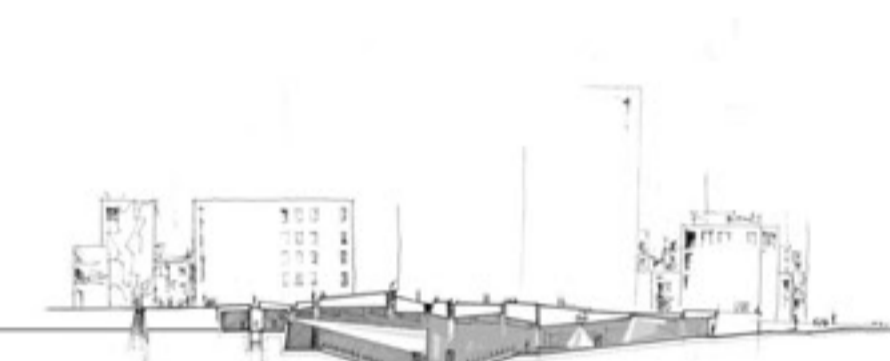
NA1802



invisible bridge__ underground cinema. light cracks on the city ground- connects you to hidden places/ to imaginative places.

invisible bridge__ phonebox on the river-wall. window-lighthouse. connecting you to the other side of the river/ to other parts of the city...

invisible bridge__ open cinema. light projection connects you to the other side of the river/ to imaginative places.



Shanghai__ Suzhou river area River_boundary between the former british settlement and the american settlement of Shanghai. industrial area turning to residential area

