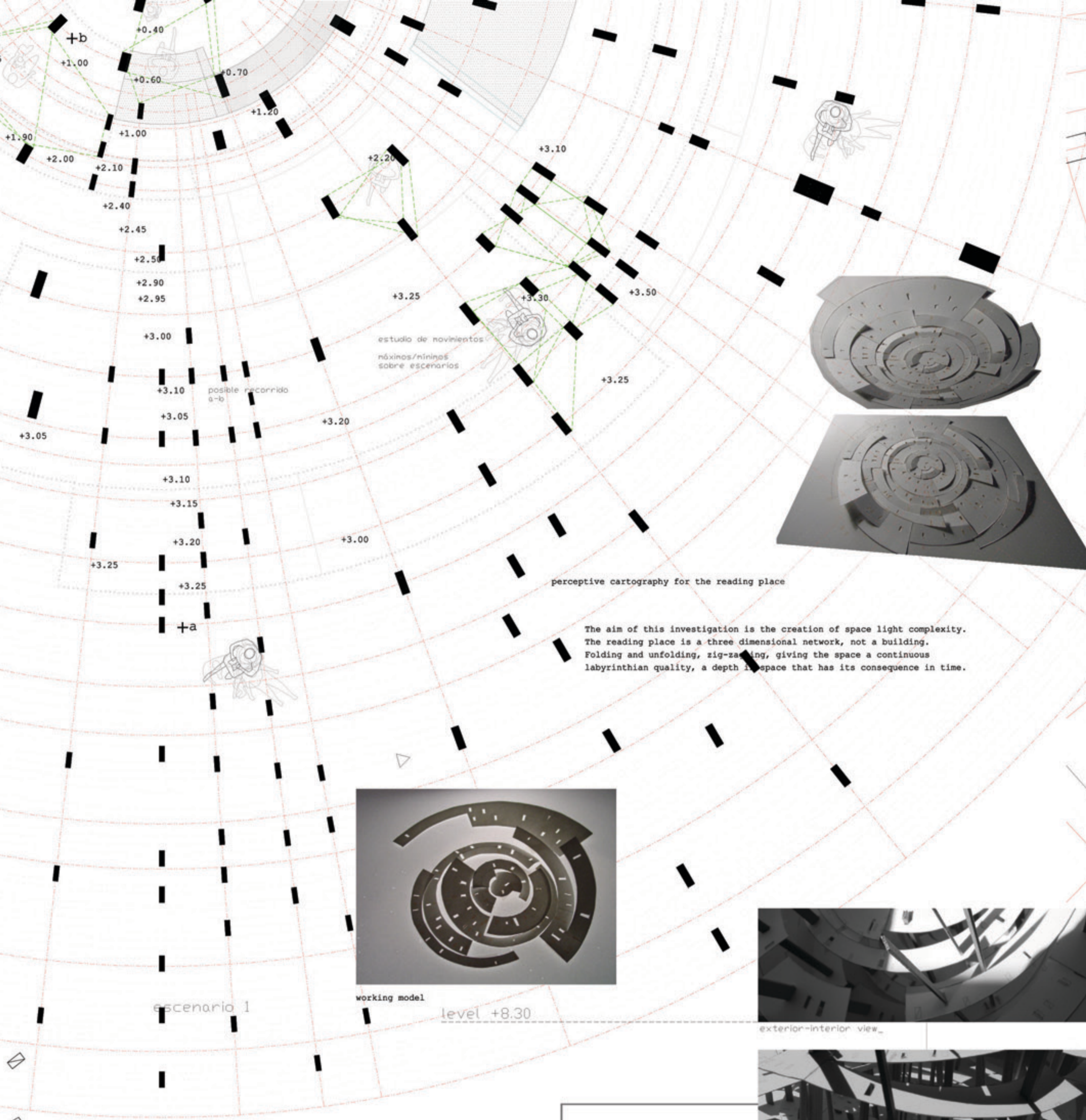
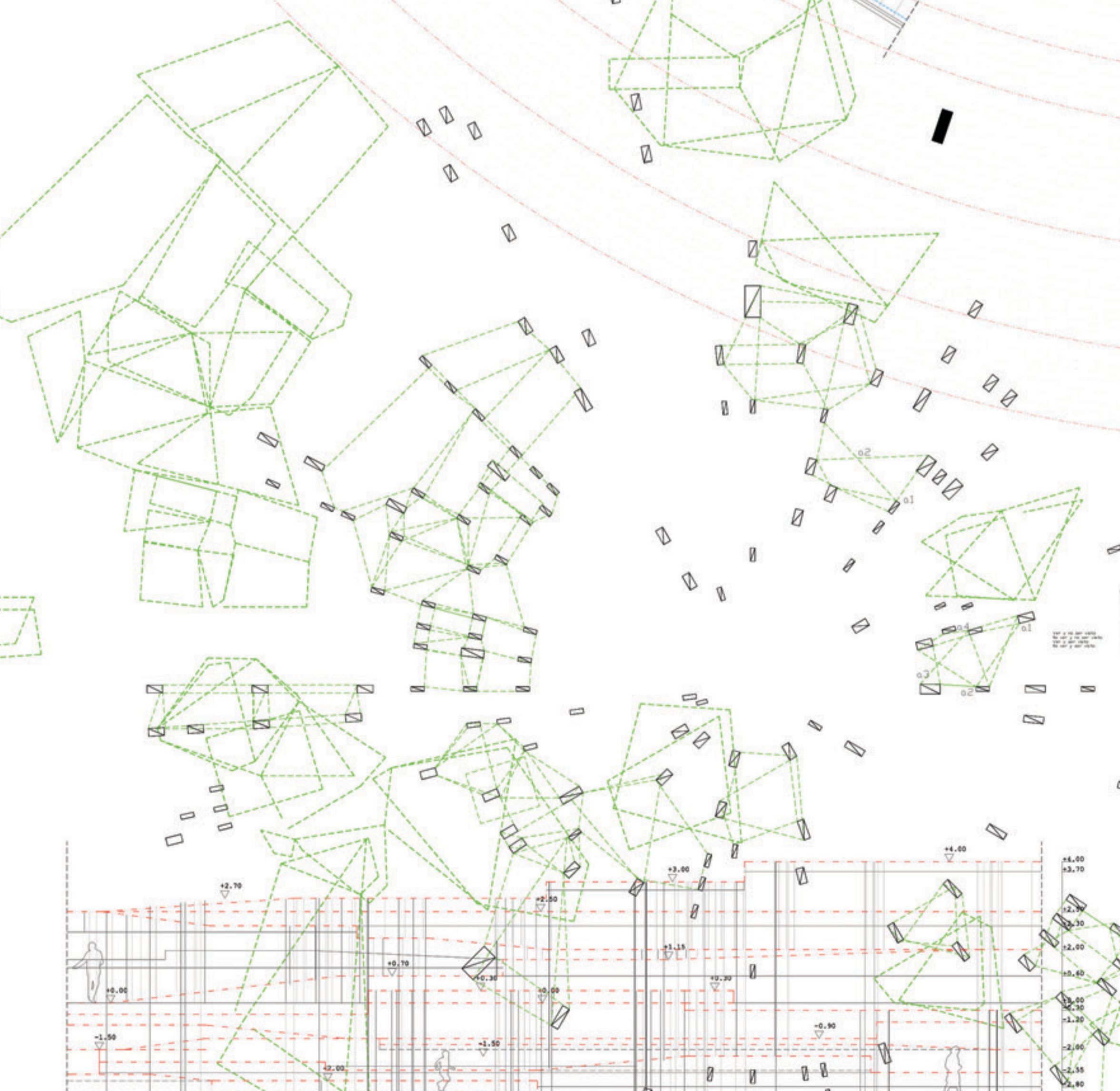
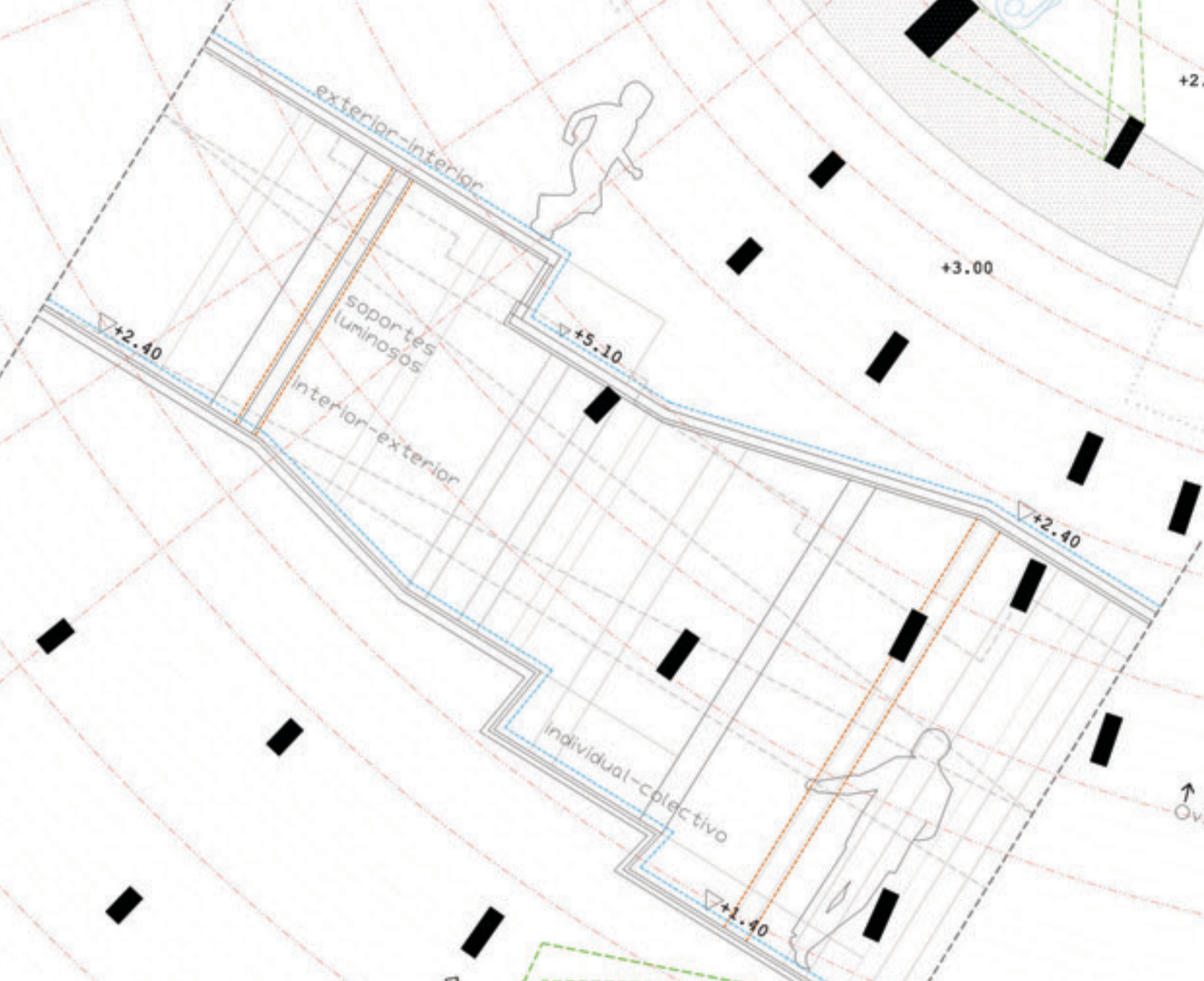


working model

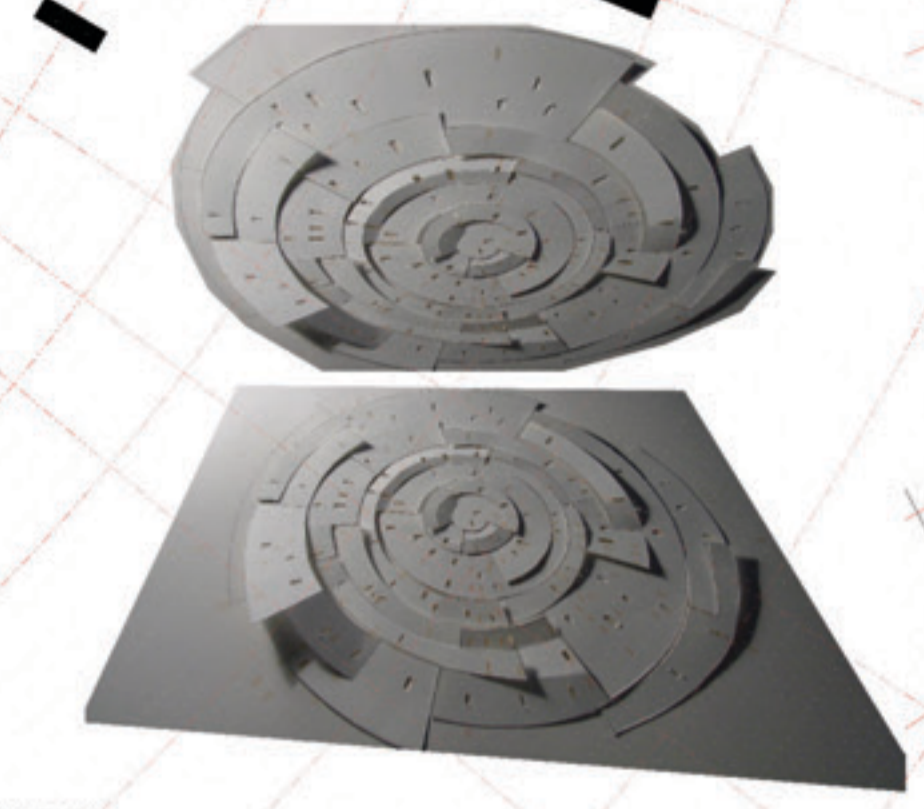
Looking would be an optional practice. The reading place fragments, when they are folded, they turn into loops, winders, attractors, accumulators and occupants of the interstitial spaces, according to the act of reading needs. The space is then full of intersections and a wide range of possibilities is therefore possible.

There are no tables because they involve chairs... There are just steps fragments; places where it is possible to remain...



perceptive cartography for the reading place

The aim of this investigation is the creation of space light complexity. The reading place is a three dimensional network, not a building. Folding and unfolding, zig-zagging, giving the space a continuous labyrinthian quality, a depth in space that has its consequence in time.

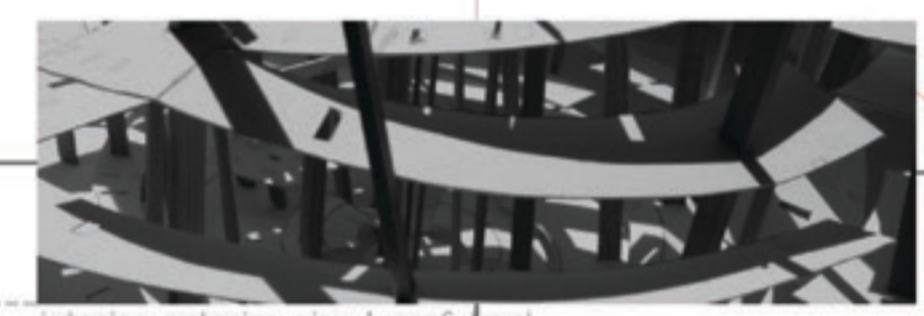


working model

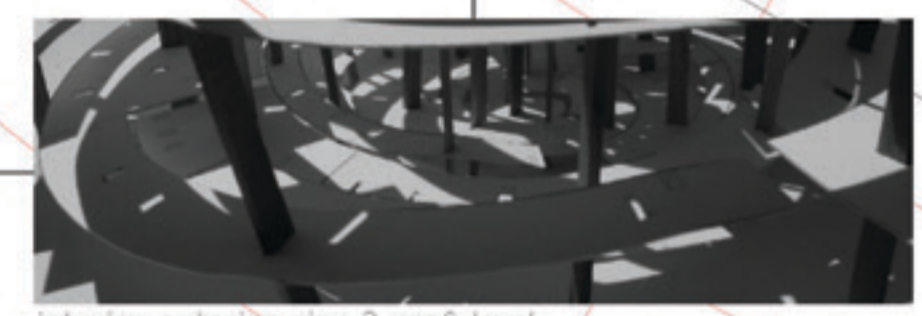
level +8.30



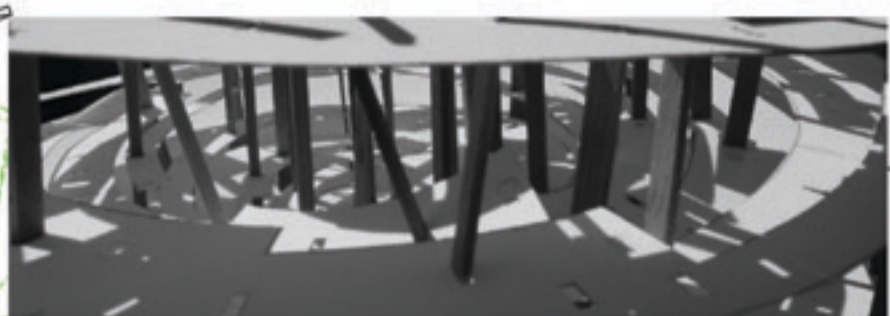
exterior-interior view



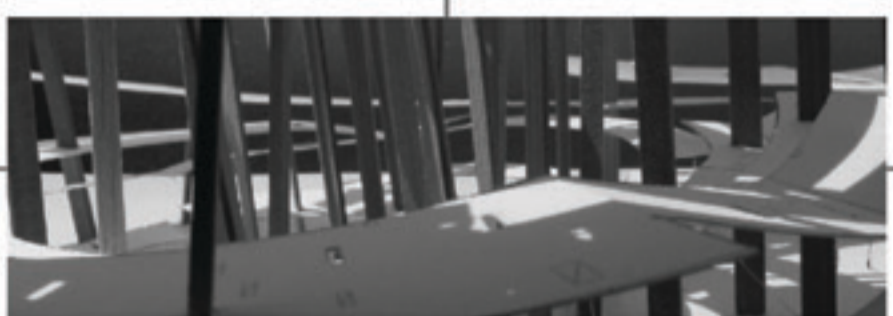
interior-exterior view 1\_roof level



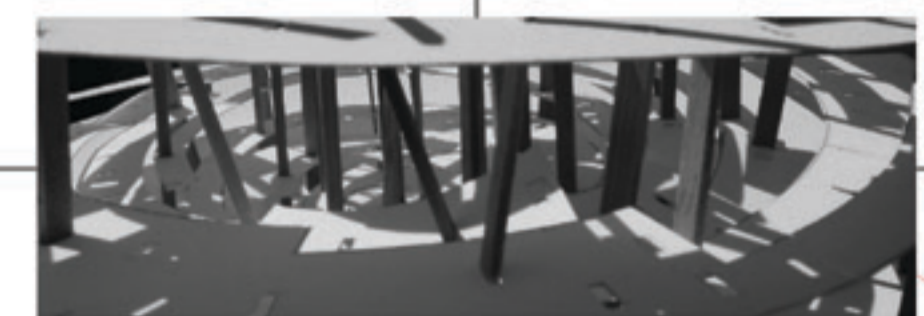
interior-exterior view 2\_roof level



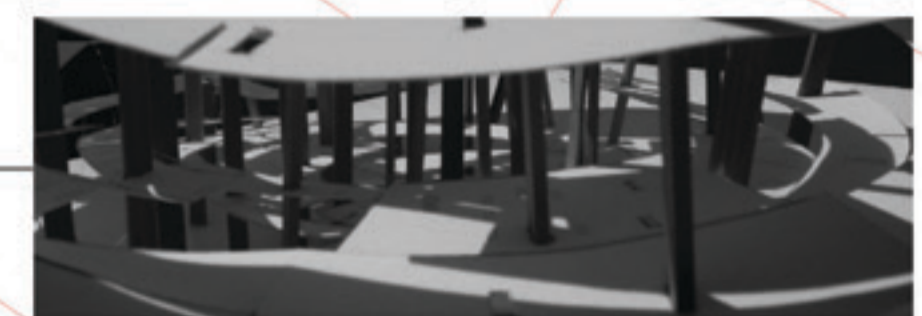
perimeter view 1\_access level



perimeter view 2\_access level



perimeter view 3\_access level

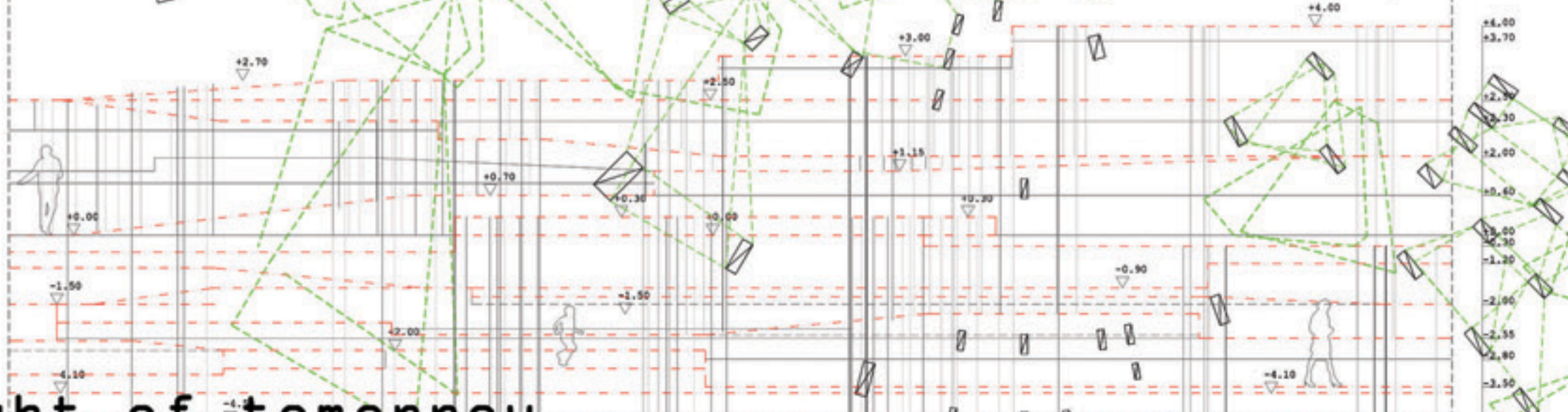


perimeter view 4\_access level

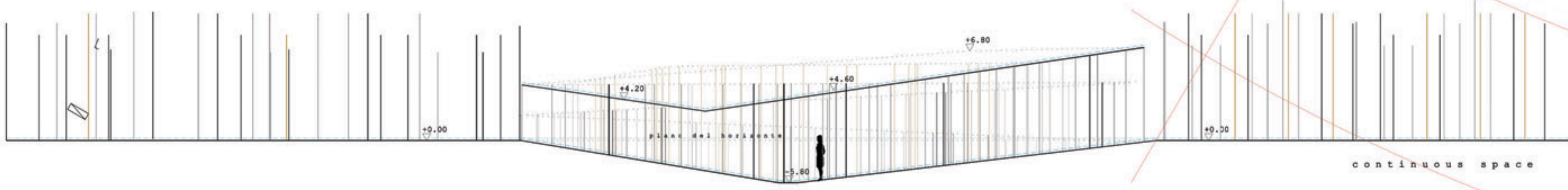


view from scenari\_underground level

conexiones espaciales



unfolding section



continuous space