

KEY:

- | | |
|--------------------------------------------------------------------------------------------------------------------------------------|----------------------------------------------------------------------------------------------------------------------------------------------------------------------------|
| Retail | Public / office / resident horizontal circulation |
| Office | Service corridors, back-up areas, plant etc. |
| Residential | Stairs, elevators and shafts |
| Gross Area | |

SCALE 1:400@ A3
 DATE 09 July 20 10

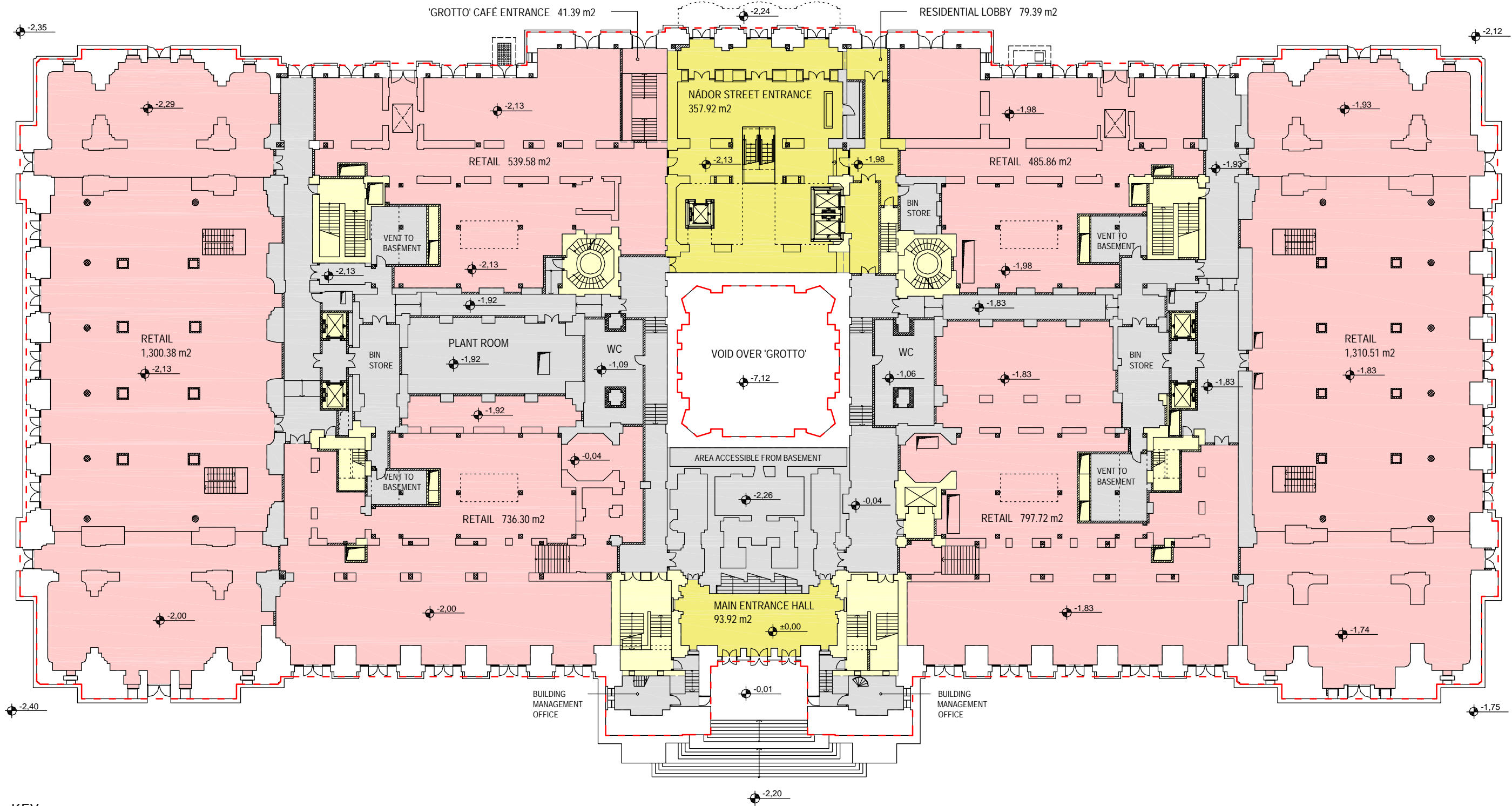
EXCHANGE PALACE

Rentable Areas - Basement

CMA INTERNATIONAL
 H-1027, Budapest, II. Margit krt. 1. III/14b
 Tel: +36 1 201 4372 / 202 23 68
 Fax: +36 1 315 0305
 Email: office@cma.hu



architecture space planning project management



KEY:

- | | |
|-----------------------------------------------------------------------------------------------------------------------------------------|-------------------------------------------------------------------------------------------------------------------------------------------------------------------------------|
| Retail | Public / office / resident horizontal circulation |
| Office | Service corridors, back-up areas, plant etc. |
| Residential | Stairs, elevators and shafts |
| Gross Area | |

SCALE 1:400@ A3
 DATE 09 July 20 10

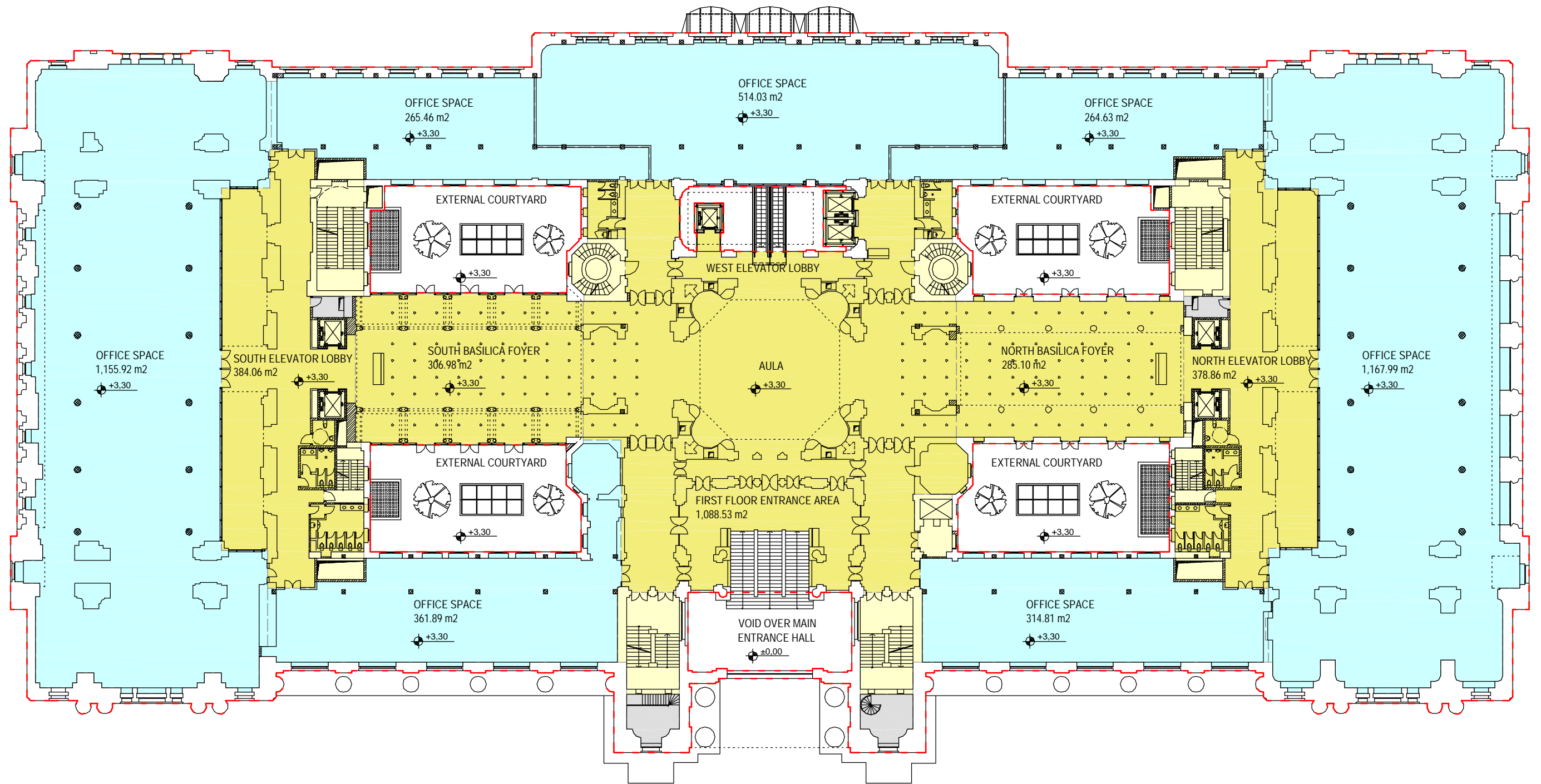
EXCHANGE PALACE

Rentable Areas - Ground Floor

CMA INTERNATIONAL
 H-1027, Budapest, II. Margit krt. 1. III/14b
 Tel: +36 1 201 4372 / 202 23 68
 Fax: +36 1 315 0305
 Email: office@cma.hu



architecture space planning project management



KEY:

- | | |
|-----------------------------------------------------------------------------------------------------------------------------------------|-------------------------------------------------------------------------------------------------------------------------------------------------------------------------------|
| Retail | Public / office / resident horizontal circulation |
| Office | Service corridors, back-up areas, plant etc. |
| Residential | Stairs, elevators and shafts |
| Gross Area | |

SCALE 1:400@ A3
 DATE 09 July 20 10

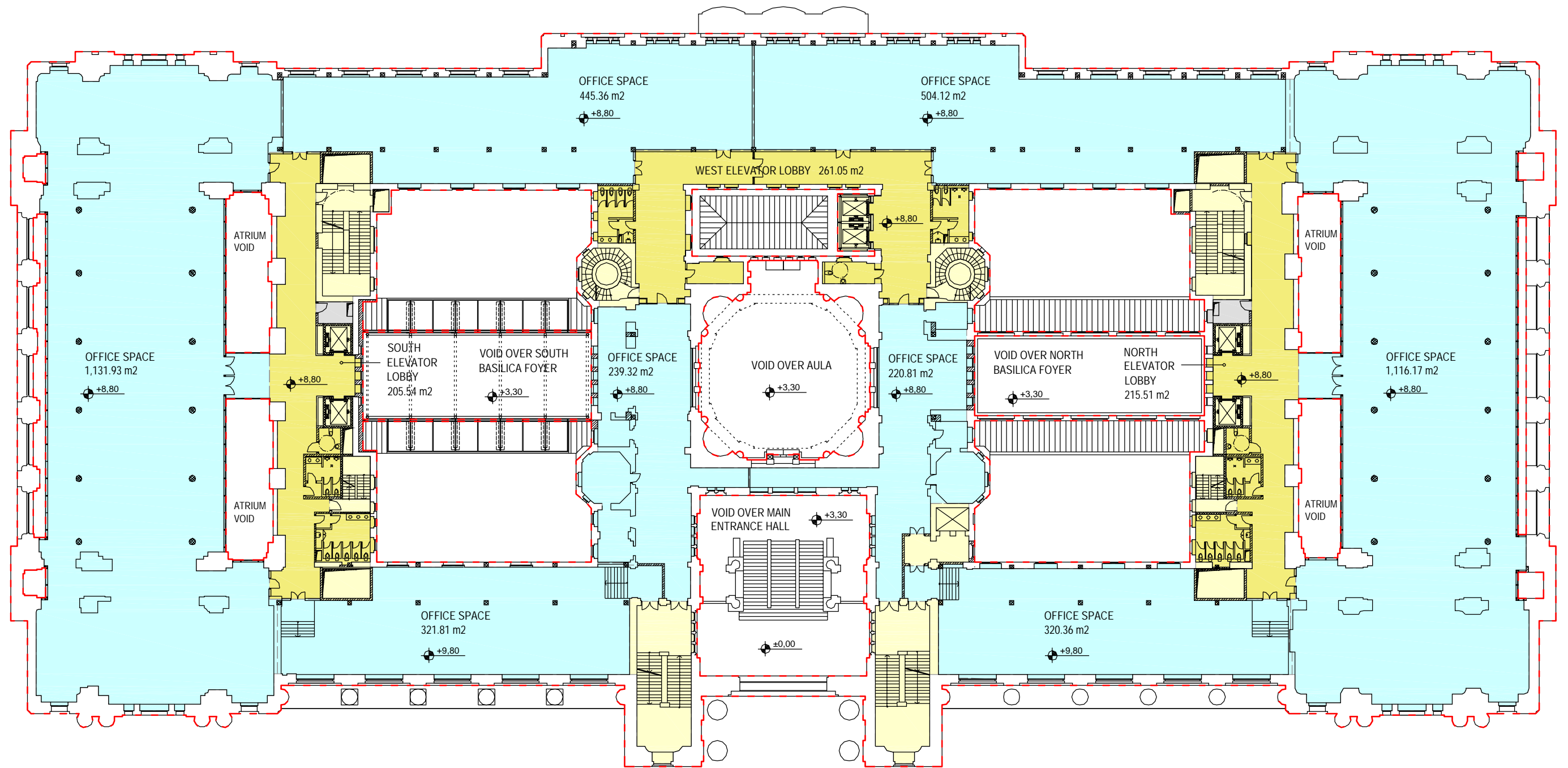
EXCHANGE PALACE

Rentable Areas - First Floor

CMA INTERNATIONAL
 H-1027, Budapest, II. Margit krt. 1. III/14b
 Tel: +36 1 201 4372 / 202 23 68
 Fax: +36 1 315 0305
 Email: office@cma.hu



architecture space planning project management



KEY:

- | | |
|-----------------------------------------------------------------------------------------------------------------------------------------|-------------------------------------------------------------------------------------------------------------------------------------------------------------------------------|
| Retail | Public / office / resident horizontal circulation |
| Office | Service corridors, back-up areas, plant etc. |
| Residential | Stairs, elevators and shafts |
| Gross Area | |

SCALE 1:400@ A3
 DATE 09 July20 10

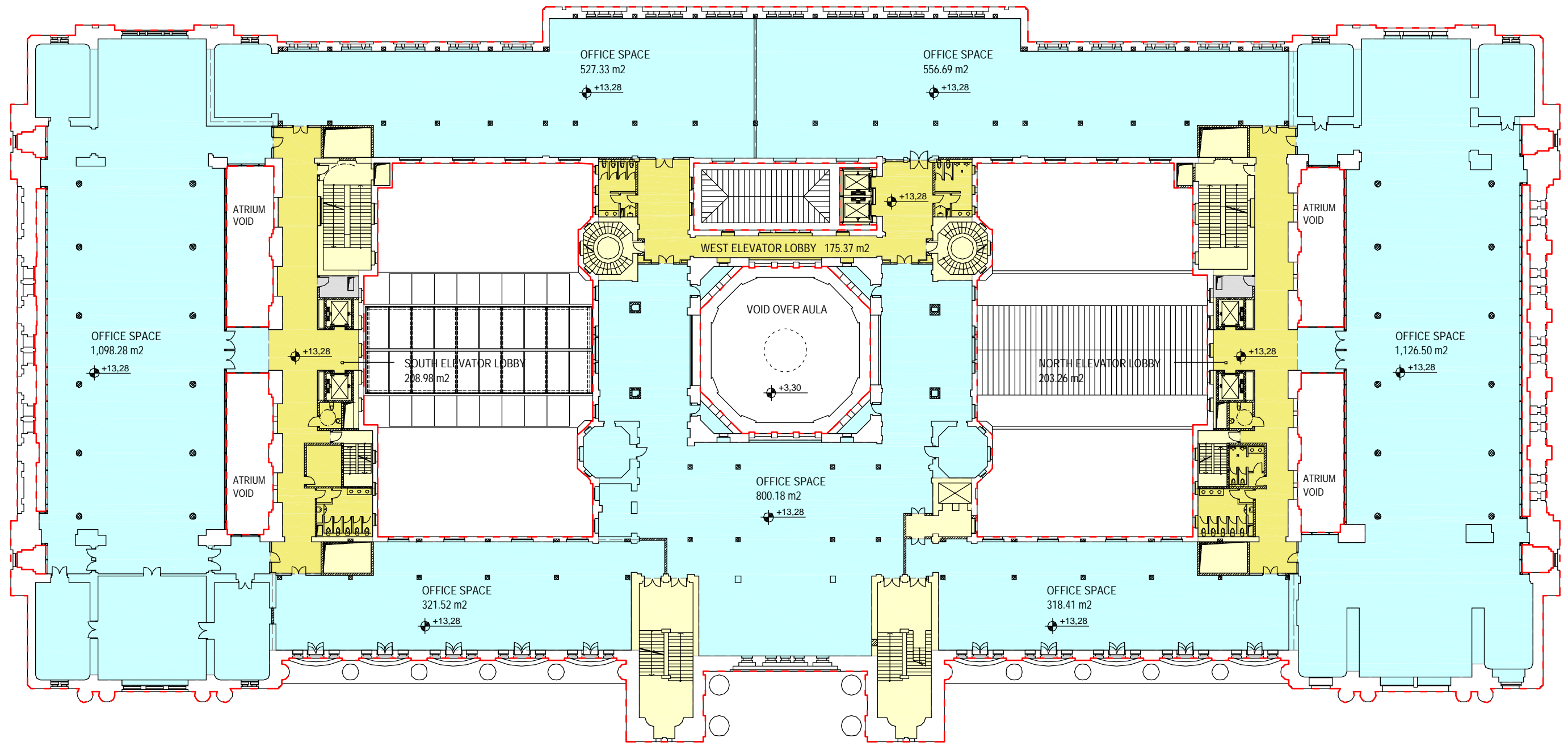
EXCHANGE PALACE

Rentable Areas - Second Floor

CMA INTERNATIONAL
 H-1027, Budapest, II. Margit krt. 1. III/14b
 Tel: +36 1 201 4372 / 202 23 68
 Fax: +36 1 315 0305
 Email: office@cma.hu



architecture space planning project management



- KEY:
- Retail
 - Office
 - Residential
 - Gross Area
 - Public / office / resident horizontal circulation
 - Service corridors, back-up areas, plant etc.
 - Stairs, elevators and shafts

SCALE 1:400@ A3
 DATE 09 July 20 10

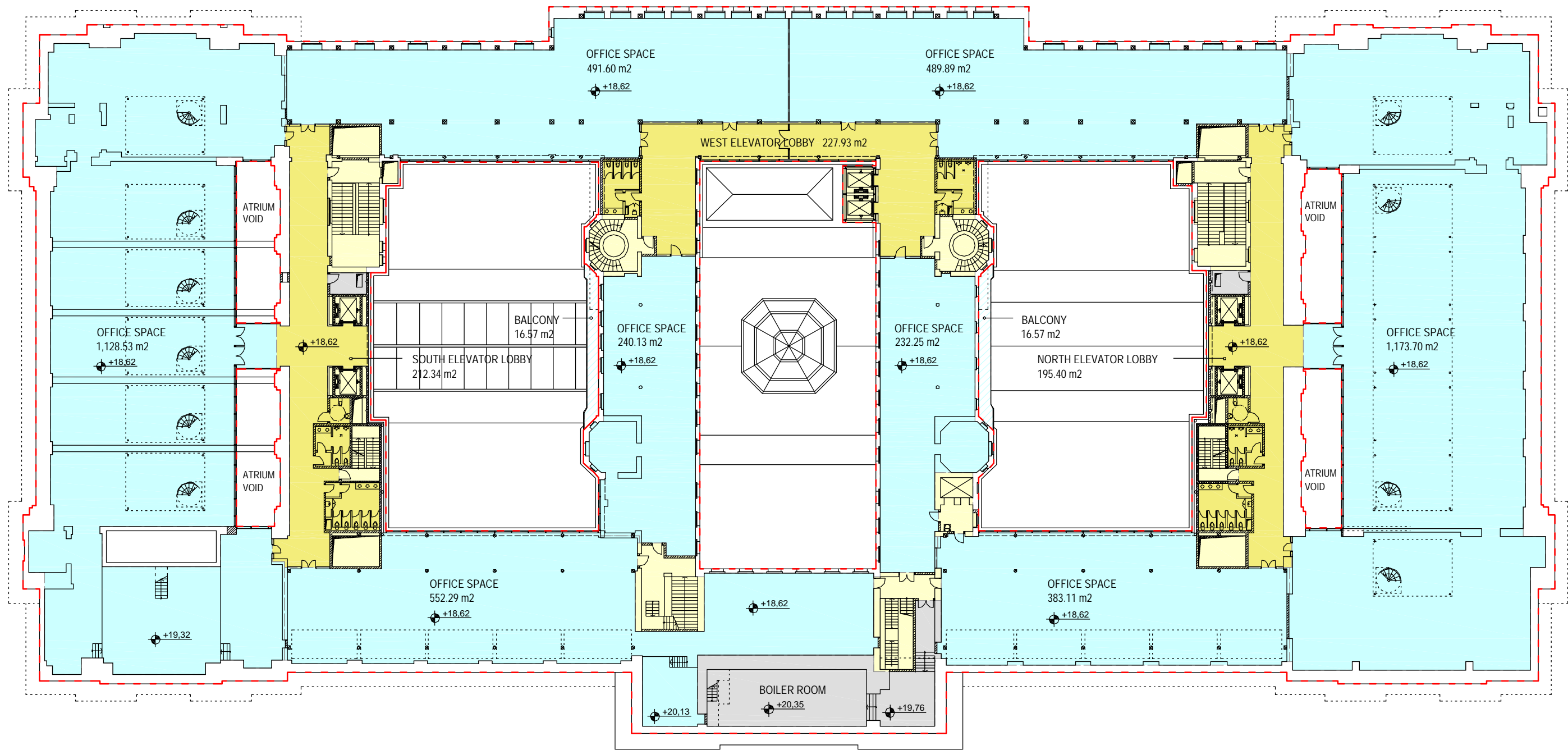
EXCHANGE PALACE

Rentable Areas - Third Floor

CMA INTERNATIONAL
 H-1027, Budapest, II. Margit krt. 1. III/14b
 Tel: +36 1 201 4372 / 202 23 68
 Fax: +36 1 315 0305
 Email: office@cma.hu



architecture space planning project management



- KEY:
- Retail
 - Office
 - Residential
 - Gross Area
 - Public / office / resident horizontal circulation
 - Service corridors, back-up areas, plant etc.
 - Stairs, elevators and shafts

SCALE 1:400@ A3
 DATE 09 July 20 10

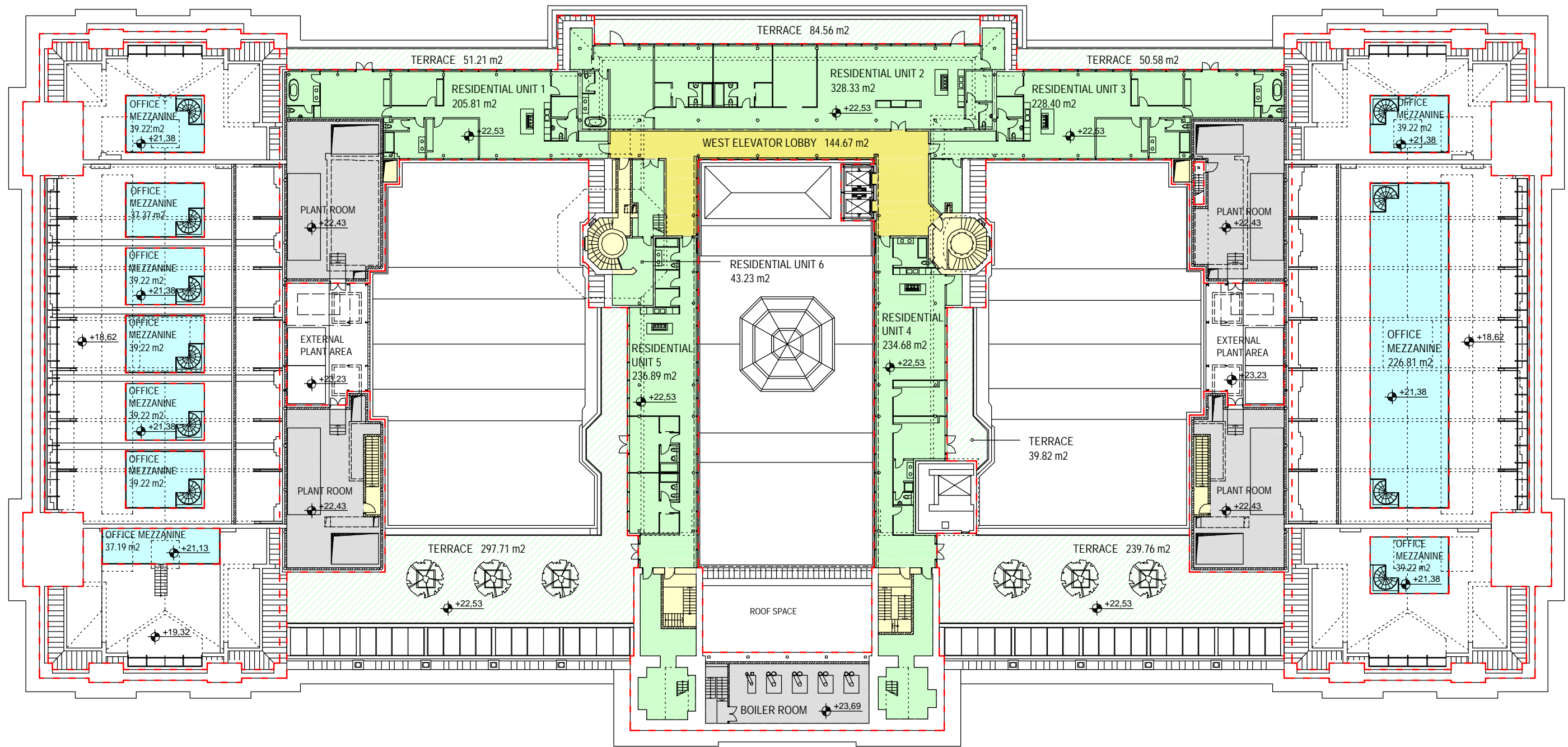
EXCHANGE PALACE

Rentable Areas - Fourth Floor

CMA INTERNATIONAL
 H-1027, Budapest, II. Margit krt. 1. III/14b
 Tel: +36 1 201 4372 / 202 23 68
 Fax: +36 1 315 0305
 Email: office@cma.hu



architecture space planning project management



- KEY:
- Retail
 - Public / office / resident horizontal circulation
 - Office
 - Service corridors, back-up areas, plant etc.
 - Residential
 - Stairs, elevators and shafts
 - Gross Area

SCALE 1:400@ A3
 DATE 09 July 20 10

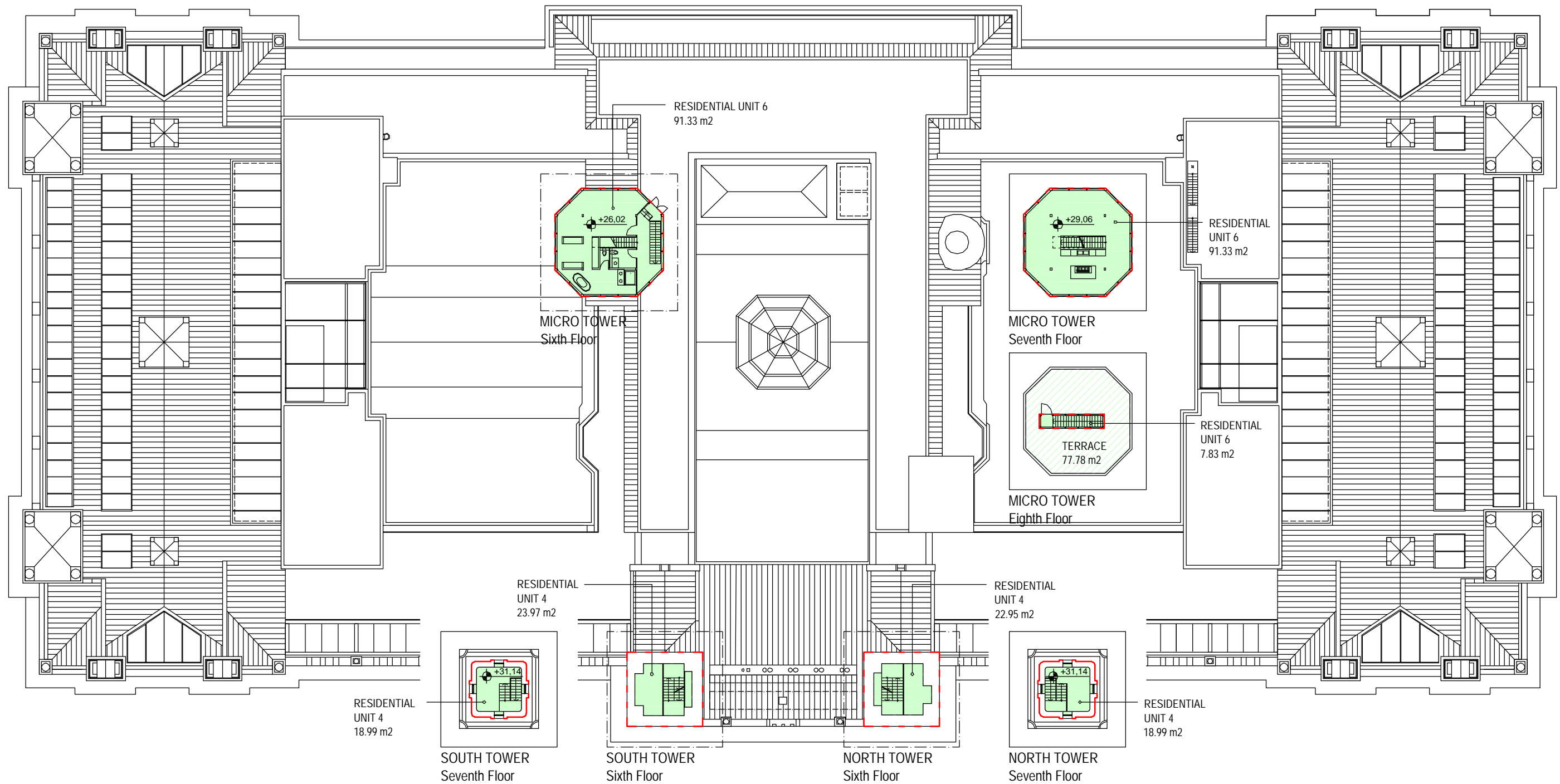
EXCHANGE PALACE

Rentable Areas - Fifth Floor





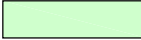


CMA INTERNATIONAL
 H-1027, Budapest, II. Margit krt. 1. III/14b
 Tel: +36 1 201 4372 / 202 23 68
 Fax: +36 1 315 0305
 Email: office@cma.hu



architecture space planning project management



KEY:

- | | | | |
|-------------------------------------------------------------------------------------|-------------|-------------------------------------------------------------------------------------|---------------------------------------------------|
|  | Retail |  | Public / office / resident horizontal circulation |
|  | Office |  | Service corridors, back-up areas, plant etc. |
|  | Residential |  | Stairs, elevators and shafts |
|  | Gross Area | | |

SCALE 1:400@ A3
DATE 09 July 20 10

EXCHANGE PALACE

Rentable Areas - Sixth, Seventh & Eighth Floors

CMA INTERNATIONAL
H-1027, Budapest, II. Margit krt. 1. III/14b
Tel: +36 1 201 4372 / 202 23 68
Fax: +36 1 315 0305
Email: office@cma.hu



architecture space planning project management