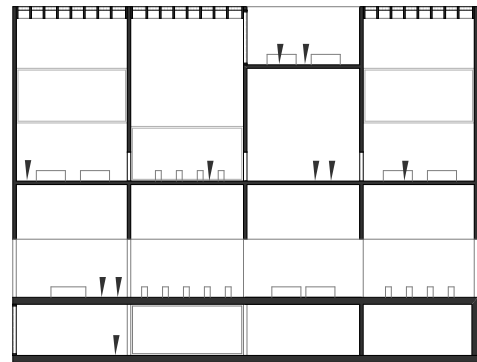
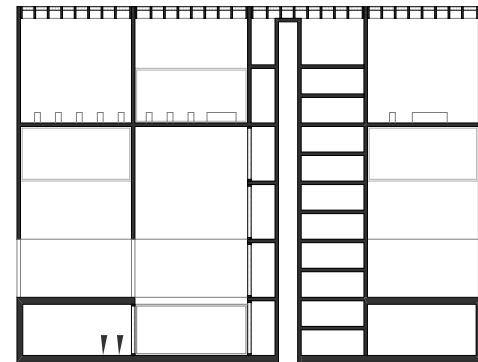


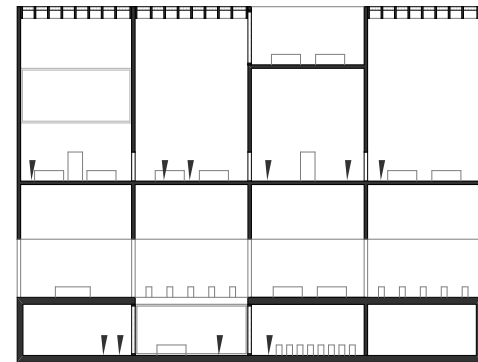
between SKY and GROUND



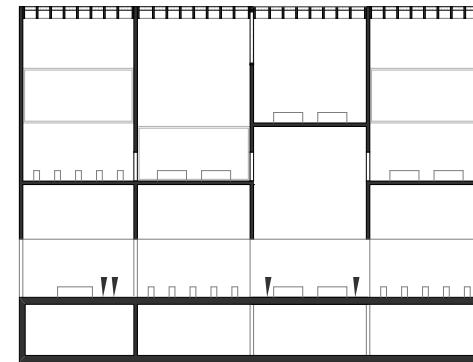
Section a



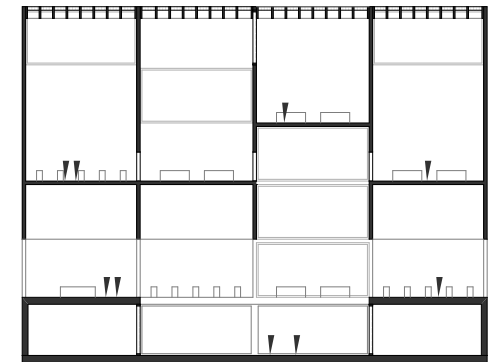
Section b



Section c



Section d



Section e

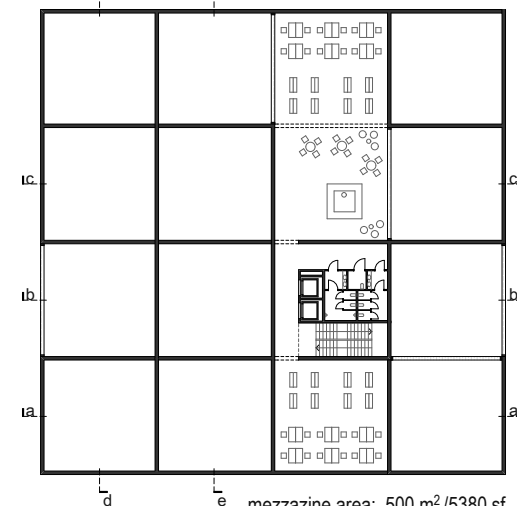
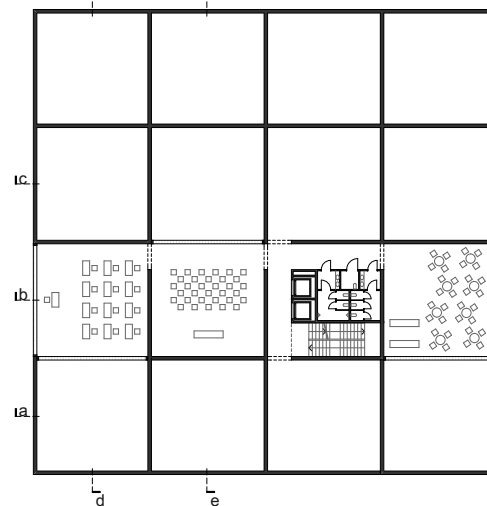
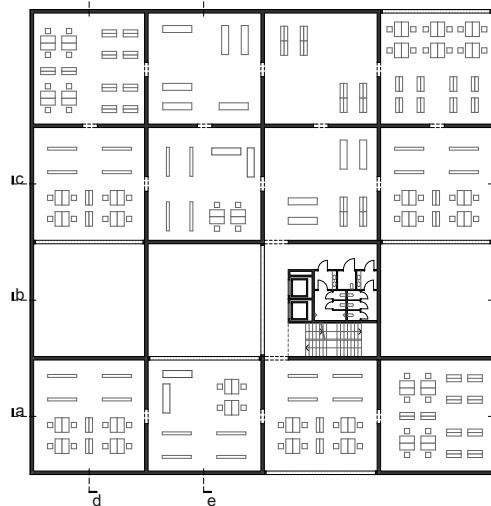
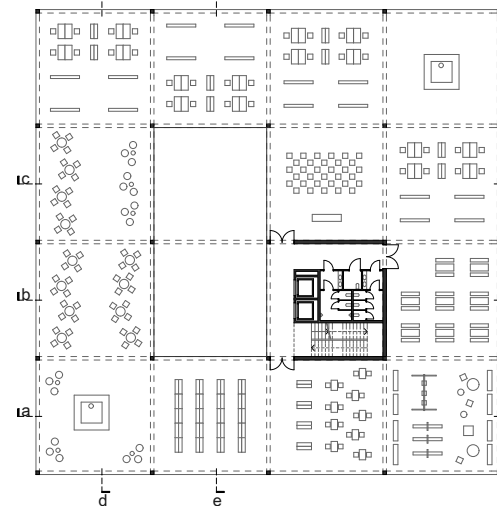
Ground floor +0,00 m
gross area 1600 m²/17220 sf

Upper ground floor +5,00 m /16.4 f
gross area 1400 m²/15070 sf

First floor +15,00 m /49.21 f
gross area 1300 m²

Second floor +20,00 m /65.61 f
gross area 400 m²/4300 sf

Third floor +25,00 m /82.0 f
gross area 400 m²/4300 sf



mezzanine area: 500 m²/5380 sf
total area: 5600 m²/60280 sf

10 m
10 f

